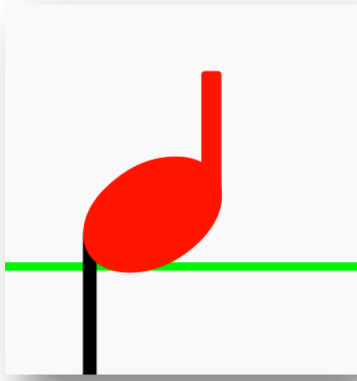
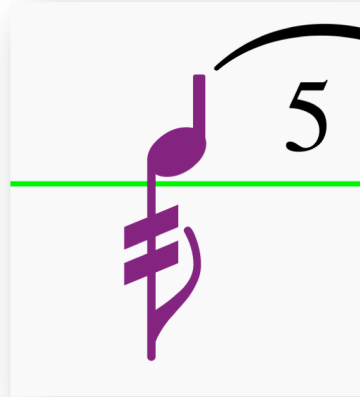


## Request 1/4:



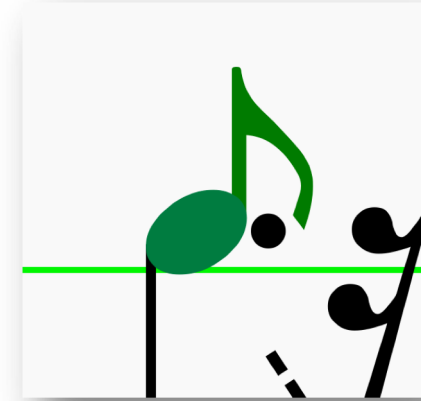
## Request 2/4:



## Request 3/4:



## Request 4/4:



### Request 1/4 (flam abbreviated):

A new notehead for snare drum based on 1/4 or 1/2 noteheads,  
- whereas the stem generally is placed below the notehead and  
- whereas the notehead consists of a new element on the upper right section, being designed as a short version of a stem,  
- in width basically as wide as the stem itself,  
- in length approximately 3:12 resp. 1:4 compared to the length of the stem.

### Request 2/4 (grace note with flam):

A new notehead for snare drum based on 1/4 notehead of a grace note (scaled down),  
- whereas the stem generally is placed below the notehead and  
- whereas the notehead consists of a new element on the upper right section, being designed as a short version of a stem,  
- in width basically as wide as the stem itself,  
- in length approximately 3:12 resp. 1:4 compared to the length of the stem.

### Request 3/4 (grace note without flam):

A new notehead for snare drum based on 1/4 or 1/2 noteheads,  
- whereas the stem generally is placed below the notehead and  
- whereas that gracenote is made available as an independent note to be used in a palette,  
so that a slur can be linked directly to that notehead of that ghost- or gracenote.

### Request 4/4 (Doublé):

A new notehead for snare drum based on 1/4 or 1/2 noteheads,  
- whereas the stem generally is placed below the notehead and  
- whereas the notehead consists of a new element on the upper right section, being designed as a short version of a stem,  
- in width basically as wide as the stem itself,  
- in length approximately 3:12 resp. 1:4 compared to the length of the stem and  
- whereas a (modified) „Internal combining flag above“ of Bravura is matched to that short stem

Comment: „modified“, because there might be a conflict when overlapping a punctuation.