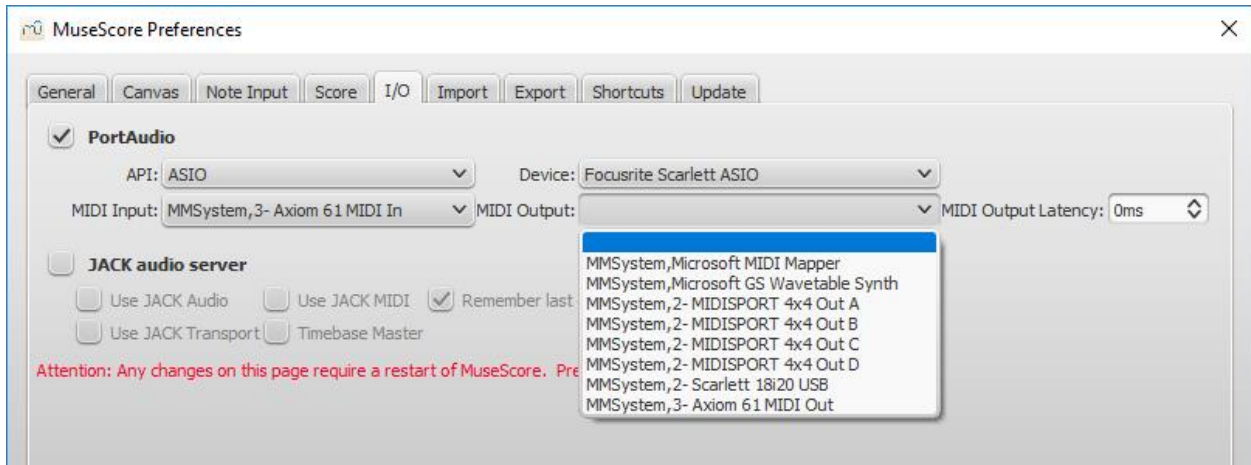
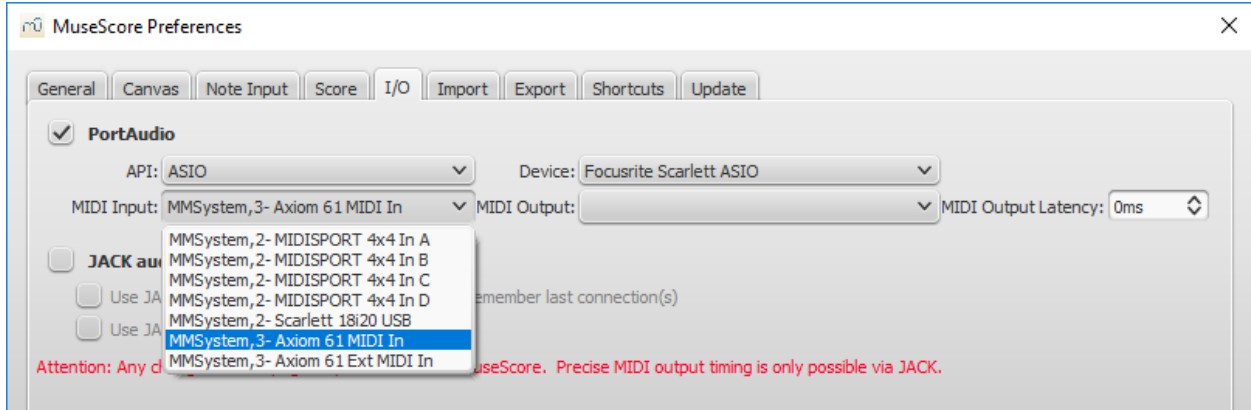


Hello!

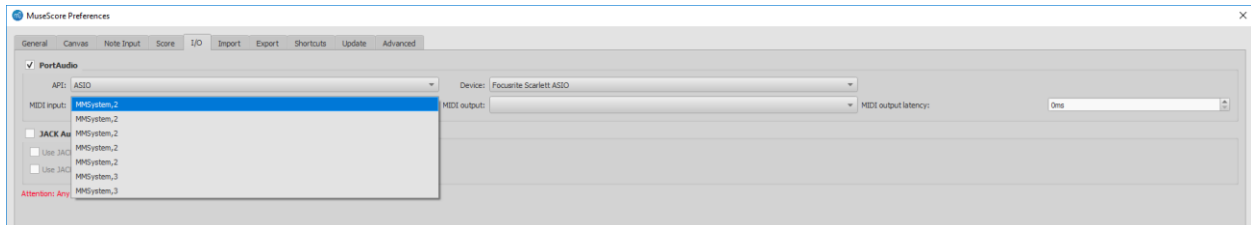
Thank you for your reply!

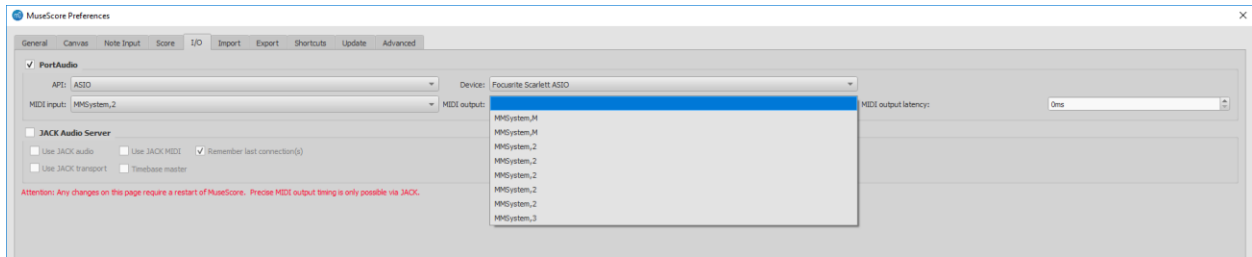
I am using a Focusrite Scarlett 18i20 for my audio device. I am using an MAudio Axiom 61 for my keyboard.

Musescore 2.3.2 would recognize my MIDI gear.



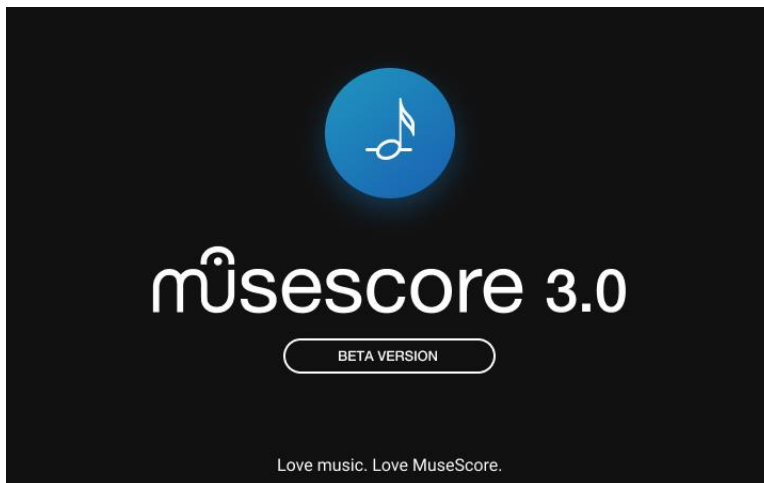
Musescore 3.0 has generic and non-descriptive labels. I am not sure what I am trying to choose.





Also, it takes MuseScore 3.0 about twice as long as MuseScore 2.3.2 to load at start up.

MuseScore 3.0 sits on this screen for a while.



Any ideas why?

THANK YOU again!!