

Cry Me a River

C instruments

Arthur Hamilton

$\text{♩} = 66$

Swing

Rit. D7(b9)

Gm9

G \flat dim G \flat 7(B5) F5(7)

C \flat 13 /F

Dm7

D \flat 13 /F

C7sus4

Am7(b5)



A

a tempo

Gm9

F \sharp aug

Gm7
3

Gm6

Cm7

F13

B \flat 6/9

D7aug
3



Now _____ you say you're lon - ly _____ you cry the long night through _____
Now _____ you say you're sor - ry _____ for be - ing so un - true _____

1. D7

Am7(B5)



cry _____ me a ri - ver cry _____ me a ri - ver _____ I cried a ri - ver o - ver you.

B

2.

A7

B \flat 6

Em7(b5)

Dm

A

Dm6

Gm6

B \flat 7

A7



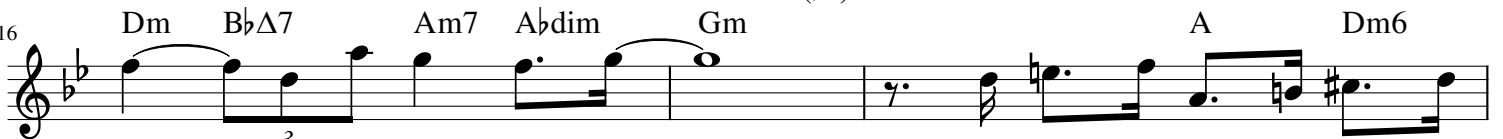
you. You drove me near - ly drove me out of my head

Dm

A7aug

E \flat 7(b5)

Em7(b5)



while _____ you never let a tear _____ Re - mem - ber? I re - mem - ber

C

Double tempo feel - - - - -

19 Gm6 Bb7 A7 D9 D9(b5) D7(#9)

all that you said_ told me love was too ple - bi - bi - an,

21 D9 D9(b5) D7(#9) D7(b5) Gmadd9 F#aug Gm7 3 Gm6

told me you were through with me and now_____ you say you love me_

24 Cm7 F13 Bb6/9 D7aug G7aug 3 G7

well to 3 prove you do_____ You can cry_____ me a ri - ver

27 C9 Eb9 F13 3 Bb6 Em7(b5) A7

cry_____ me a ri - ver I cried a ri - ver o - ver you

D

♩ = 80
DM

30 A Dm6 Gm6 Bb7 A7

You drove me near - ly drove me out of my head.

32 Dm BbΔ7 Am7 Abdim Gm A Dm6

while 3 you never let a tear. Re - mem - ber I re - mem - ber

E

double tempo feel - - - - -

35 Gm6 B \flat 7 A7 D9 D9(b5) D7(#9)

all that you said, told me love was too ple - bi - bi - an,

37 D9 D9(b5) D7(#9) D7(b5) $\text{♩} = 66$ Gmadd9 F#aug Gm7₃ Gm6

told me you were through with me and now you say you love me_

40 Cm7 F13 B \flat 6/9 D7aug G7aug G7

well to ³ prove you do You can cry ³ me a ri - ver

43 C9 E \flat 9 F13

cry ³ me a ri - ver I cried a ri - ver o - ver I cried a ri - ver

46 *molto rall.* E \flat 9 F13 B \flat 6 A7 Em7(b5)

molto rall. I cried a ri - ver o - ver you