

This is my original, created using Visiv Sharpeye by scanning and converting to an intermediate format and then saving as MIDI:



This is what MuseScore makes of the MIDI file:



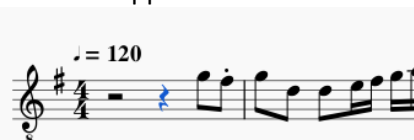
I'm pretty delighted, but I would like to match the original by:

1. changing the rests to anacrusis/pick up
2. changing the first figure to two semiquavers.

In the manual (downloaded on 27th April 2019) there is a reference to "create a pickup measure" when modifying an existing score (p38). The software only refers to "bars", as far as I can see, and I can't find this option.

I then tried to edit the figure and this is what I did and what happened

Change semiquaver to quaver...



Add dot to rest ...



Change quaver back to semiquaver ...



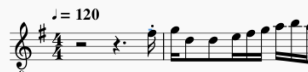
Change the other quaver back to semiquaver ...



Delete rest ...



Delete the other rest ...



Delete dotted rest (couldn't remove dot independently) ...



There is also something going on with the voices, but I just don't understand them at all.