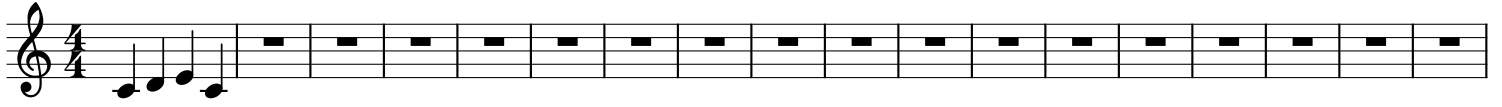
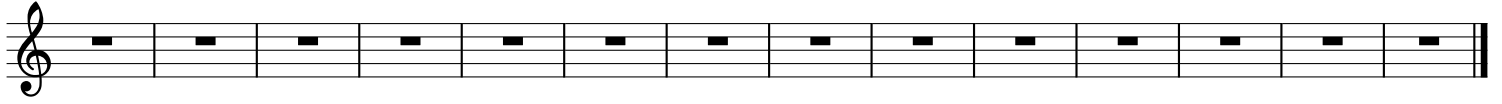


# demo



19



B $\flat$  Clarinet

demo

31

Musical notation for B $\flat$  Clarinet, measure 31. The staff is in treble clef with a key signature of one sharp (F#) and a 4/4 time signature. The first part of the measure contains four quarter notes: F#4, G4, A4, and B4. The second part of the measure is a whole note rest. The measure ends with a double bar line.