

PartsTest

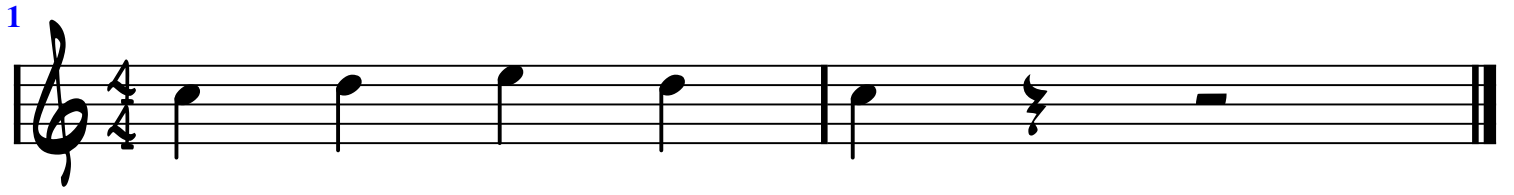
1

KB

G1

G2

C G C



1

G1

KB

G2

C G C

1

The image shows a musical staff in 4/4 time with a treble clef. A blue number '1' is positioned above the first measure. The staff contains three measures of music, each with a chord symbol above it: 'C' in the first measure, 'G' in the second measure, and 'C' in the third measure. Each chord symbol is accompanied by a short horizontal bar on the staff. The first measure is marked with a '4' above the staff. The piece concludes with a double bar line at the end of the third measure. An '8' is written below the first measure.