

Dear Team,

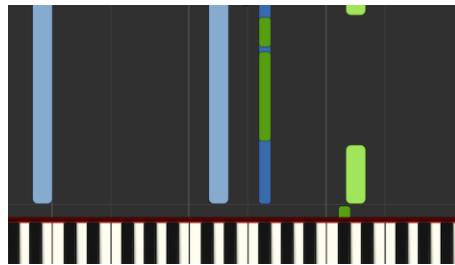
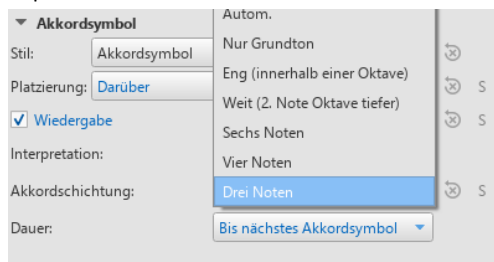
i miss the following Setting when introducing chords:

If you use the keys Ctrl + K to define a chord above a note, for example a Bm,

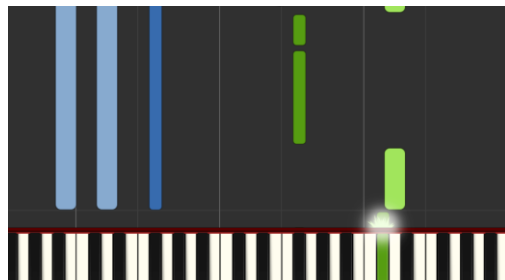
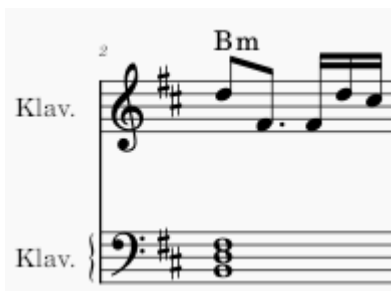


you can hear it well, but if you want to export the score as a midi file, the position of the chords is not optimally placed so that you can play the piece as a solo piano.

Inspekteur-Chord



To do this, you first have to add a second staff, i.e. a bass clef, and then enter the chord yourself again.



It would be nice and easy if you could select this basic chord with three notes directly via the inspector.

With best regards

Dimi