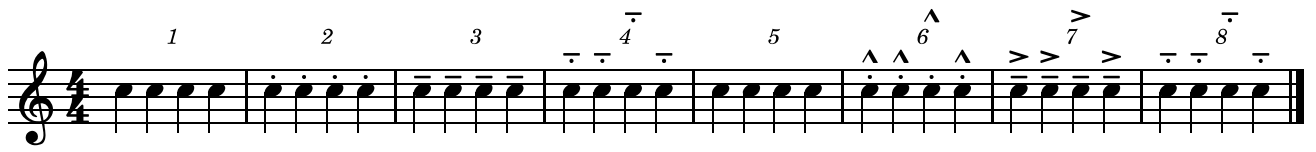


Articulation vs. measure number problem



Articulation vs. measure number problem

1 2 3 4 5 6 7 8

The image shows a single musical staff in 4/4 time, containing eight measures of music. Each measure consists of four eighth notes. Above the staff, the measures are numbered 1 through 8. Measure 4 has a bar line above it. Measure 6 has accents (^) above it. Measure 7 has accents (>) above it. Measure 8 has a bar line above it.

Articulation vs. measure number problem

1 2 3 4 5 6 7 8

The image shows a single staff of music in 4/4 time, consisting of eight measures. The notes are as follows: Measure 1: quarter, quarter, quarter, quarter. Measure 2: quarter, quarter, quarter, quarter. Measure 3: quarter, quarter, quarter, quarter. Measure 4: quarter, quarter, quarter, quarter. Measure 5: quarter, quarter, quarter, quarter. Measure 6: quarter, quarter, quarter, quarter. Measure 7: quarter, quarter, quarter, quarter. Measure 8: quarter, quarter, quarter, quarter. Above the notes, there are articulation marks: measure 4 has two horizontal bars over the first and second notes; measure 6 has two ^ marks over the first and second notes; measure 7 has two > marks over the first and second notes; measure 8 has two horizontal bars over the first and second notes.