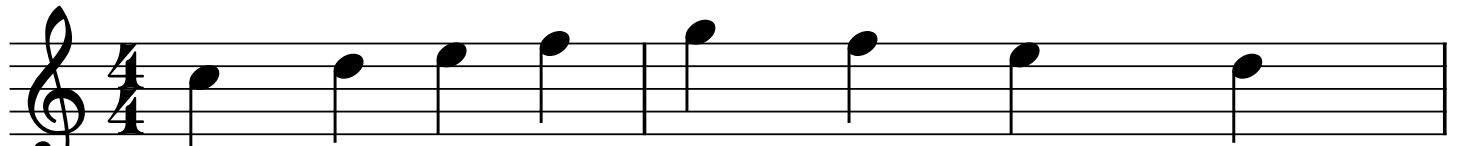
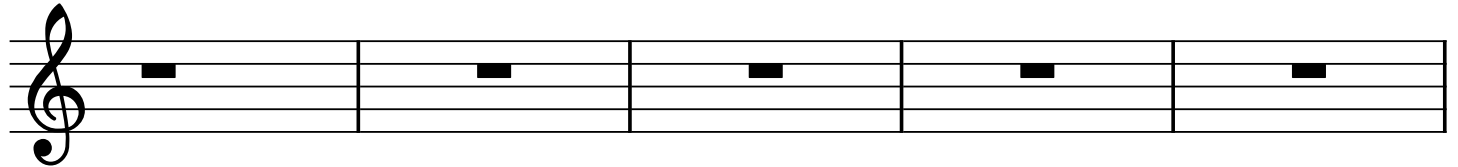


Lyrics Spacing Test

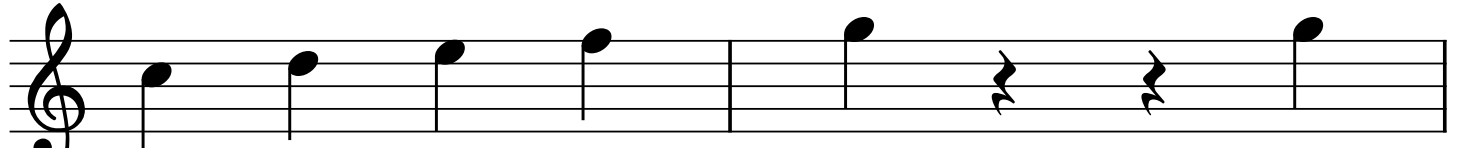


When there is a ve - ry long wooooooord,

3



8



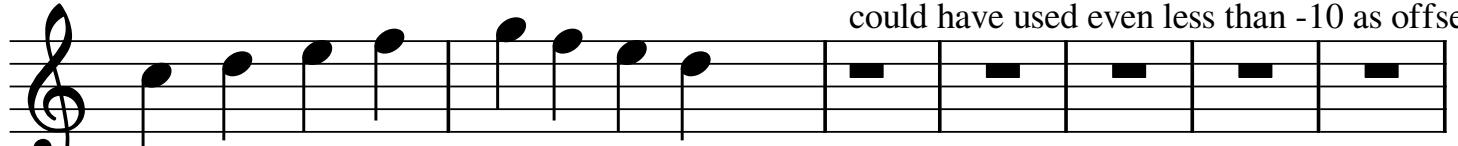
I'd like to save spaaace wheere

10



ev - er I can.

12



the bar line on start of measure 14
could have used even less than -10 as offset

19



When there is a ve-ry long wooooooord,

I'd like to save spaaace wheere ev-er I can...

For the g at the beginning of measure 24 I had
to use a vertical X offset for notehead and stem

together with a negative left distance the f on beat 2 here could have used
an negative offset

23



Thiiiiis is an - oth-er eeeex - amp - le
of howww to save spaaace in case...