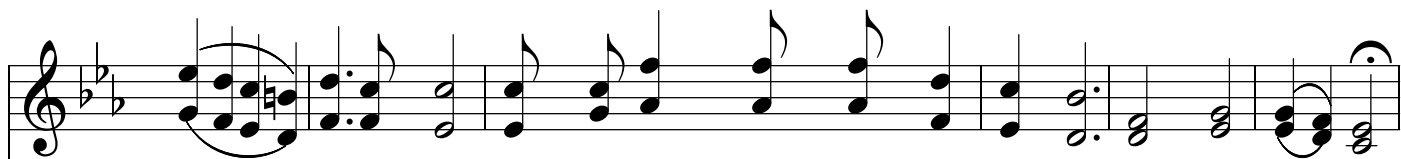




нюсь Свя-то-му и-ме-ни Тво-е-му, Свя-то-му и-ме-ни Тво-е-му.



Гос - по - ди, Те - бя жа - ждет ду - ша мо - я. Ду - ша мо - я.



*Соло: Тенор*



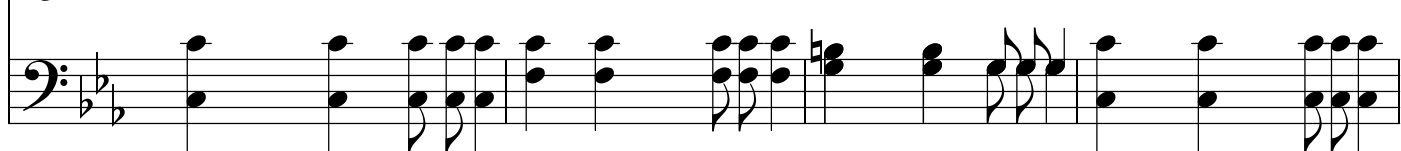
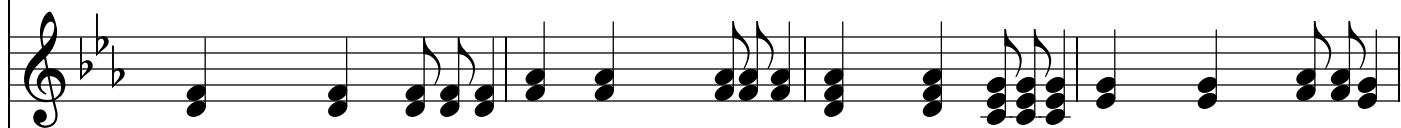
Од-но-го прошу я у Господа, чтобы пребывать мне у ног Христа.



*Хор 1 раз м.м. 2 раз слова pp*



И всю жизнь мою я хочу Господь, красоту Твою созерцать душой.



С каждым днём меня приближай к Себе, чтоб не для себя, жил я для Тебя.



A musical score consisting of two staves, both in the key of B-flat major (two flats). The top staff uses a treble clef and the bottom staff uses a bass clef. Both staves feature a whole-note chord progression. The first measure contains a triad of notes: B-flat (middle line), D-flat (first space), and F (second space) in the treble; and B-flat (second space), D-flat (third space), and F (third space) in the bass. The second measure contains a triad of notes: B-flat (first space), D-flat (second space), and F (third space) in the treble; and B-flat (second space), D-flat (third space), and F (third space) in the bass. The notes in both staves are connected by a slur, indicating they are held for the duration of the measure. The score concludes with a double bar line.