

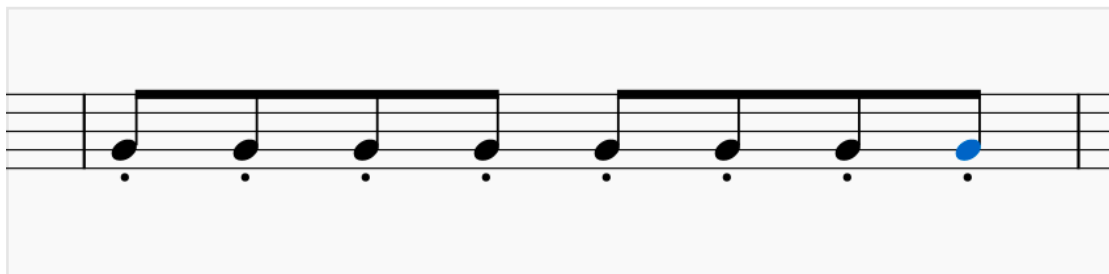
Articulation input in 4.0 ("Cycle"):

The system introduced in 4.0 was the same as always when it'd come to individual notes, but manipulating groups of notes en masse was changed. If you had a figure that had some (but not all) notes with articulations, if you did the command Shift+S once, the system would first fill in every note with an articulation (Staccato in this case), and doing the command once more would then remove all of the notes at once. Which, in the long run, was much more efficient for removing articulations all at once.

Step 1:



Step 2:



Step 3:



Articulation input in pre-4.0/4.1 ("Toggle"):

The old system, which has cropped back up in 4.1, simply toggled the state of whether or not the note has an articulation. Which sacrifices the flexibility of the new system in 4.0, because now you can't simply remove all of your articulations at once with the same command. For it will only invert the selection you already had.

Step 1:



Step 2:

