

(Arr. Snelton) Don't Blame Me" (J. McHugh)

Chord diagram for CMA 6/9 E(b5) with a circled '2P' and an 'A' in a circle.

Musical notation for the first measure, showing a treble clef, a 4/4 time signature, and a key signature of one sharp (F#).

Chord diagram for A13(sur) -> A7 E.

Musical notation for the second measure, showing a treble clef and a 4/4 time signature.

Chord diagram for Dm7 G13.

Musical notation for the third measure, showing a treble clef and a 4/4 time signature.

Chord diagram for CMA 9 with a circled '2P'.

Musical notation for the fourth measure, showing a treble clef and a 4/4 time signature.

Chord diagram for Dm7 G13 with a circled 'SP'.

Musical notation for the fifth measure, showing a treble clef and a 4/4 time signature.

Chord diagram for Em7 A7 C#7 with a circled '7P'.

Musical notation for the sixth measure, showing a treble clef and a 4/4 time signature.

Chord diagram for Dm7 G7 with a circled 'SP'.

Musical notation for the seventh measure, showing a treble clef and a 4/4 time signature.

Chord diagram for CMA7 Eb9 with a circled '8P'.

Musical notation for the eighth measure, showing a treble clef and a 4/4 time signature.

Chord diagram for A MA7 G7 with a circled '4P'.

Musical notation for the ninth measure, showing a treble clef and a 4/4 time signature.

Chord diagram for FMA 6 F#07 with a circled '3P'.

Musical notation for the tenth measure, showing a treble clef and a 4/4 time signature.

Chord diagram for CMA 6/9 A m7 A m7 with a circled '7P'.

Musical notation for the eleventh measure, showing a treble clef and a 4/4 time signature.

Chord diagram for Gm7 F#7(9) E7 with a circled '12P'.

Musical notation for the twelfth measure, showing a treble clef and a 4/4 time signature.

Chord diagram for F MA with a circled '9P'.

Musical notation for the thirteenth measure, showing a treble clef and a 4/4 time signature.

Chord diagram for E7 b5 b9 with a circled '6P'.

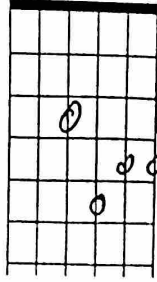
Musical notation for the fourteenth measure, showing a treble clef and a 4/4 time signature.

Chord diagram for A m7 E7(9) with a circled '9P'.

Musical notation for the fifteenth measure, showing a treble clef and a 4/4 time signature.

"D.B.M" (2)

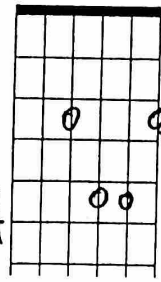
xv



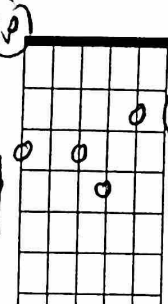
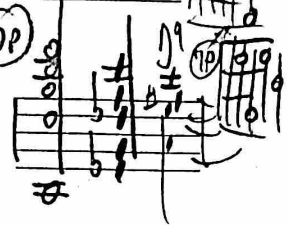
Am (7P)



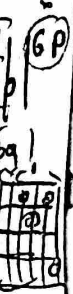
x 0



Am: " Eb13 (a) (SP)

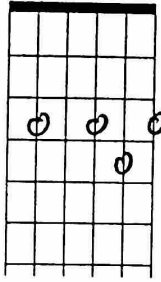


(3P)

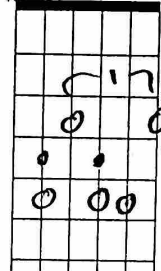
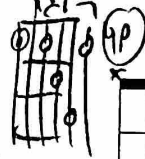
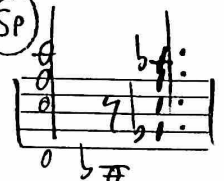


(6P)

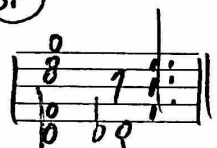
x x



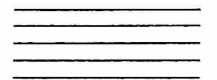
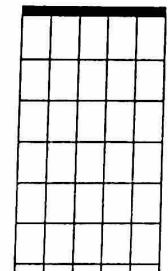
Am: " Eb13 (4P)



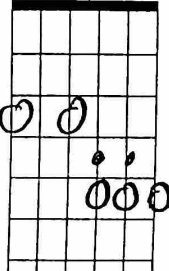
(3P)



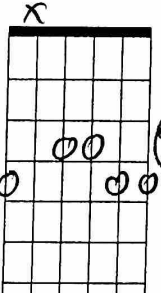
Dm: " D b7(#9)



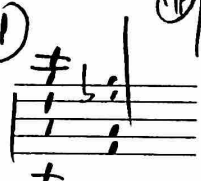
x



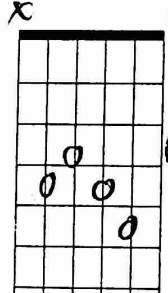
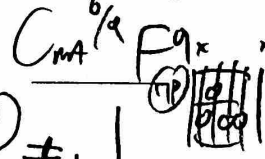
G13(sul) G+9 (4P)



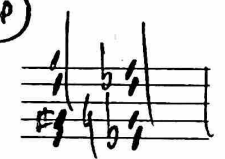
(7P)



D.C. al Coda

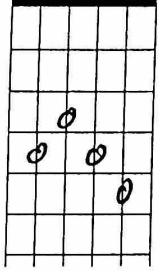


(6P)

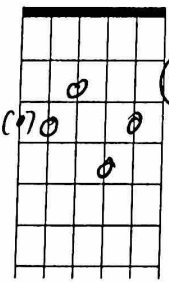


E7(#9) E9 (SP)

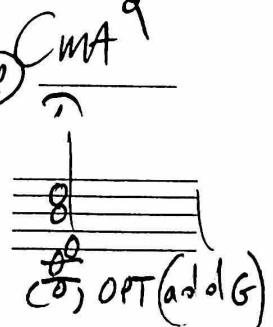
x x



D7(#9) D9 (4P)



(2P)



(C) OPT (add G)

