

Vc+Kb+Timp

# Come, Ye Sons of Art

Z 323

Nahum Tate

Henry Purcell (1659-1695)

## 1. Symphony

**(Largo)**

Bass

6/5 6 6 5/4 6/5 6/5 2 2 2 6 7 6 6

**(Allegro)**

**Sestetto**

8

B.

6 6 6 7 6 5 6 5 3 4 7 6 5 6 5 3

17

B.

4/2 6 3 6 6 7 6 2 6 7

23

B.

6 5 3 6 6 6 7 6 5 3 7 #6 6 7 6 #

29

B.

7 #6 #5 6 7 #5 7 6 6 # 5 6 6 5 6

37

B.

7 6 6 5 6 7 6 6 5 5 3

44 (Adagio)

B.

55

B.

## 2. Come, ye Sons of Art - I (solo and chorus)

(Allegro)

60 BC solo

71

82

93

105

117

129

141

### 3. Sound the trumpet (duet)

(Andante)

144 VCL solo

B. Musical staff 144-148: Bass clef, common time signature. Measures 144-148 contain a continuous eighth-note melody.

B. Musical staff 149-153: Bass clef, common time signature. Measures 149-153 contain a continuous eighth-note melody.

B. Musical staff 154-158: Bass clef, common time signature. Measures 154-158 contain a continuous eighth-note melody. A first ending bracket labeled "1." spans measures 157 and 158.

B. Musical staff 159-163: Bass clef, common time signature. Measures 159-163 contain a continuous eighth-note melody. A second ending bracket labeled "2." spans measures 161 and 162. The melody includes a sharp sign on the eighth note of measure 162.

B. Musical staff 164-168: Bass clef, common time signature. Measures 164-168 contain a continuous eighth-note melody. The melody includes a sharp sign on the eighth note of measure 166.

B. Musical staff 169-173: Bass clef, common time signature. Measures 169-173 contain a continuous eighth-note melody.

B. Musical staff 174-178: Bass clef, common time signature. Measures 174-178 contain a continuous eighth-note melody. A first ending bracket labeled "1." spans measures 176 and 177. A second ending bracket labeled "2." spans measures 177 and 178. The staff ends with a double bar line, a repeat sign, and a 3/4 time signature.

# 4. Come, ye Sons of Art - II (chorus)

178 (Allegro)

B. 

189

B. 

200

Tutti

B. 

212

B. 

225

B. 

# 5. Strike the viol (solo and chorus)

(Moderato)

234 VLC solo

B. *soft* *loud*

241

B. *soft*

248

B. *loud* *soft*

255

B. 1. 2.

262

B.

269

B. 1. 2. Cb

276

B.

283

B.

290

B. 1. 2.

297

B.

304

B.

311

B. 1. 2.

5b. The day that such a blessing gave (solo and chorus)

317

B.

327

B.

337

B.

347

B.

357

B.

368

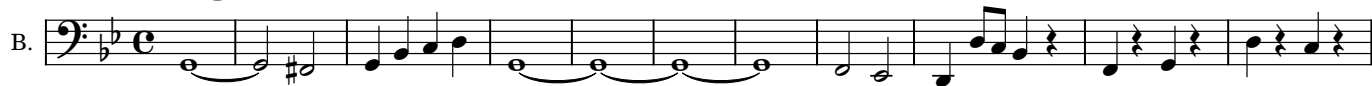
B.

378

B.

# 6. Bid the Virtues (solo)

387 (Adagio)



398



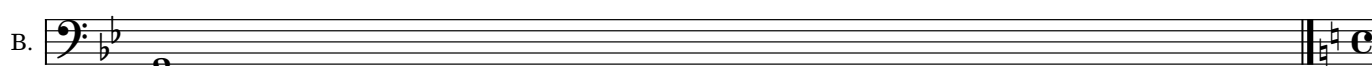
407



416



422



# 7. This are the sacred charms (solo)

423 (Andante)



427



431



435



439



442




446

B. 

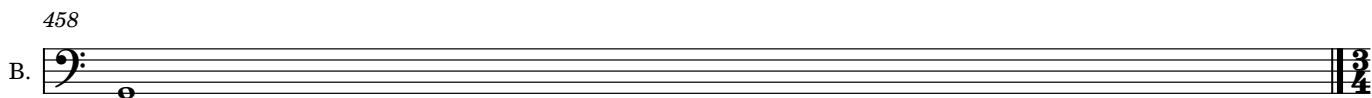
450

B. 

454

B. 

458

B. 



# 8. See Nature, rejoicing (soli and chorus)

(Allegro)

459 VLC solo

B. Musical notation for bass clef, measures 459-471. Includes first and second endings.

472

B. Musical notation for bass clef, measures 472-485.

486

B. Musical notation for bass clef, measures 486-498.

499

B. Musical notation for bass clef, measures 499-512.

513

Timp. Musical notation for timpani, measures 513-519.  
B. Musical notation for bass clef, measures 513-519.

6  
4  
2

520

Timp. Musical notation for timpani, measures 520-526. Includes first and second endings.  
B. Musical notation for bass clef, measures 520-526.

5 6 7 5 7 5 7 6 5  
3 3 3 3 3 3 3 4 3

527

B. Musical notation for bass clef, measures 527-539. Includes dynamics and fingering.

# 6 # 5 # 6 6 à *p* 6 6 # *f* 9 8 7 # 6 7 # 6 6 5 #  
5 # 6 4 5 #

540

Timp. Musical notation for timpani, measures 540-546.  
B. Musical notation for bass clef, measures 540-546.

6 5 6 #6 6 4 2  
4 # 6 #6 4 2

547

Timp.

B.

6 6 7 5 7 5 7 6 5 6 6 4 6

3 3 4 3

$\frac{6}{4}$   $\frac{4}{2}$

554

Timp.

B.

6 6 6 6 6 6 6 #6

$\frac{6}{4}$  2 3

$\natural 7$

563

Timp.

B.

6 6 6 6 6 6 5 7 6 5 3

$\frac{6}{4}$  2

$\frac{4}{2}$