

La Gran Banda

Trad./Nicola Rulli

Lento **F** **F7/E \flat** **B \flat 6** **B \flat m6** **Am7** **A \flat 7(#11)** **Gm7**

Armonia

Piffero

Trumpet in B \flat

Alto Saxophone

Tenor Saxophone

Trombone

Drumset

Piano

Electric Bass

The image shows a musical score for a band. At the top, the title 'La Gran Banda' is centered. Below it, the composer/arranger 'Trad./Nicola Rulli' is noted. The score is organized into staves for different instruments. The top staff, labeled 'Armonia', shows a sequence of chords: F, F7/E \flat , B \flat 6, B \flat m6, Am7, A \flat 7(#11), and Gm7. The tempo is marked 'Lento'. The time signature is 3/4. The key signature has one flat (B \flat). The instruments listed are Piffero, Trumpet in B \flat , Alto Saxophone, Tenor Saxophone, Trombone, Drumset, Piano, and Electric Bass. The Trombone staff contains a melodic line with notes and rests. The other instrument staves (Piffero, Trumpet, Saxophones, Drumset, Piano, Electric Bass) are currently empty, with a double bar line at the beginning of each staff.

9

C7+

F

F9

Bbmaj7

Bbmin6

Am7 D7b9 Cdim7 Bbm7

Gm7

C7b9

harm.



Pff.



Tpt. in Bb



A. Sax.



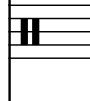
T. Sax.



Tbn.



D. Set



Pno.



El. B.



17

F

Bbm7

Eb7

Abmaj7

Gbdim7 F7

Bbm7

Eb7

Abmaj7

Ab6

Gmb5

C7b9

harm.

Musical staff for Harmonica (harm.) in G major, 4/4 time. It shows a sequence of chords: F, Bbm7, Eb7, Abmaj7, Gbdim7 F7, Bbm7, Eb7, Abmaj7, Ab6, Gmb5, and C7b9.

Pff.

Musical staff for Piano (Pff.) in G major, 4/4 time. It shows a sequence of chords: F, Bbm7, Eb7, Abmaj7, Gbdim7 F7, Bbm7, Eb7, Abmaj7, Ab6, Gmb5, and C7b9.

Tpt. in Bb

Musical staff for Trumpet in Bb (Tpt. in Bb) in G major, 4/4 time. It shows a sequence of chords: F, Bbm7, Eb7, Abmaj7, Gbdim7 F7, Bbm7, Eb7, Abmaj7, Ab6, Gmb5, and C7b9.

A. Sax.

Musical staff for Alto Saxophone (A. Sax.) in G major, 4/4 time. It shows a sequence of chords: F, Bbm7, Eb7, Abmaj7, Gbdim7 F7, Bbm7, Eb7, Abmaj7, Ab6, Gmb5, and C7b9.

T. Sax.

Musical staff for Tenor Saxophone (T. Sax.) in G major, 4/4 time. It shows a sequence of chords: F, Bbm7, Eb7, Abmaj7, Gbdim7 F7, Bbm7, Eb7, Abmaj7, Ab6, Gmb5, and C7b9.

Tbn.

Musical staff for Trombone (Tbn.) in G major, 4/4 time. It shows a sequence of chords: F, Bbm7, Eb7, Abmaj7, Gbdim7 F7, Bbm7, Eb7, Abmaj7, Ab6, Gmb5, and C7b9.

D. Set

Musical staff for Drum Set (D. Set) in G major, 4/4 time. It shows a sequence of chords: F, Bbm7, Eb7, Abmaj7, Gbdim7 F7, Bbm7, Eb7, Abmaj7, Ab6, Gmb5, and C7b9.

Pno.

Musical staff for Piano (Pno.) in G major, 4/4 time. It shows a sequence of chords: F, Bbm7, Eb7, Abmaj7, Gbdim7 F7, Bbm7, Eb7, Abmaj7, Ab6, Gmb5, and C7b9.

El. B.

Musical staff for Electric Bass (El. B.) in G major, 4/4 time. It shows a sequence of chords: F, Bbm7, Eb7, Abmaj7, Gbdim7 F7, Bbm7, Eb7, Abmaj7, Ab6, Gmb5, and C7b9. The staff includes a dynamic marking of *f* and a triplet of eighth notes.

23

Fm Fm/E^b Fm/D G7^{b9} C7 F7 B^bm7 E^b7 A^bmaj7 F7^{b13} B^bm7 E^b7

harm.

Pff.

Tpt. in B^b

A. Sax.

T. Sax.

Tbn.

D. Set

Pno.

El. B.

p

p

mf

let ring

29

Abmaj7

Gm^{b5}

C7^{b9}

Fm7

Ebm7

Ab7

Dbmaj7

C7

harm.

Musical notation for the harm. part in measure 29, showing a treble clef, a key signature of three flats (Bb, Eb, Ab), and a 4/4 time signature. The notation includes a half note chord with a flat sign above it.

Pff.

Musical notation for the Pff. part in measure 29, showing a treble clef, a key signature of three flats, and a 4/4 time signature. The notation includes a half note chord with a flat sign above it.

Tpt. in Bb

Musical notation for the Tpt. in Bb part in measure 29, showing a treble clef, a key signature of two flats (Bb, Eb), and a 4/4 time signature. The notation includes a quarter note followed by a dotted quarter note.

A. Sax.

Musical notation for the A. Sax. part in measure 29, showing a treble clef, a key signature of two flats, and a 4/4 time signature. The notation includes a quarter rest.

T. Sax.

Musical notation for the T. Sax. part in measure 29, showing a treble clef, a key signature of two flats, and a 4/4 time signature. The notation includes a quarter rest.

Tbn.

Musical notation for the Tbn. part in measure 29, showing a bass clef, a key signature of three flats, and a 4/4 time signature. The notation includes a quarter rest.

D. Set

Musical notation for the D. Set part in measure 29, showing a double bar line.

Pno.

Musical notation for the Pno. part in measure 29, showing a grand staff with treble and bass clefs, a key signature of three flats, and a 4/4 time signature. The notation includes a half note chord with a flat sign above it.

El. B.

Musical notation for the El. B. part in measure 29, showing a bass clef, a key signature of three flats, and a 4/4 time signature. The notation includes a quarter note followed by a dotted quarter note.

11/4

11/4

11/4

11/4

11/4

11/4

11/4

11/4

11/4

11/4

34 $\text{♩} = 180$

harm. $\text{♩} = 180$

Pff.

Tpt. in Bb

A. Sax.

T. Sax.

Tbn.

D. Set

Pno.

El. B.

altri

Ride

musical notation including staves, clefs, time signatures, and notes

37

harm.

Pff.

Tpt. in Bb

A. Sax.

T. Sax.

Tbn.

D. Set

Pno.

El. B.

mf

mf

mf

mf

%

%

%

%

%

%

A1

Gm7

40

harm.

Pff.

Tpt. in Bb

A. Sax.

T. Sax.

Tbn.

D. Set

Pno.

El. B.

mf

Ride swing

Comping

v

46

D7

Gm7

C7

C7b13

Am7

Abdim7

Gm7

A7b13

harm.

Notation for the harp part, showing a treble clef and a key signature of one flat (Bb).

Pff.

Notation for the piano part, showing a treble clef and a key signature of one flat (Bb). It includes a triplet of eighth notes in the final measure.

Tpt. in Bb

Notation for the trumpet in Bb part, showing a treble clef and a key signature of two sharps (F# and C#). It features a melodic line with accents and a dynamic marking of *mp*.

A. Sax.

Notation for the alto saxophone part, showing a treble clef and a key signature of two sharps (F# and C#). It features a melodic line with a dynamic marking of *mp*.

T. Sax.

Notation for the tenor saxophone part, showing a treble clef and a key signature of two sharps (F# and C#). It features a melodic line with a dynamic marking of *mp*.

Tbn.

Notation for the trombone part, showing a bass clef and a key signature of one flat (Bb). It features a melodic line with accents and a dynamic marking of *mp*.

D. Set

Notation for the drum set part, showing a set of five lines representing the drum kit.

Pno.

Notation for the piano part, showing a grand staff with treble and bass clefs and a key signature of one flat (Bb).

El. B.

Notation for the electric bass part, showing a bass clef and a key signature of one flat (Bb).

54

Dm7

D7(b9)

G7

harm.

Pff.

Tpt. in Bb

A. Sax.

T. Sax.

Tbn.

D. Set

Pno.

El. B.

A2

58

A7(b9)

D7

Gm7

D7

Gm7

C7

C7(b9)

harm.

harm. staff with treble clef and key signature of one sharp (F#). Chord symbols are placed above the staff: A7(b9), D7, Gm7, D7, Gm7, C7, C7(b9).

Pff.

Pff. staff with treble clef and key signature of one flat (Bb). First measure contains a triplet of eighth notes.

Tpt. in Bb

Tpt. in Bb staff with treble clef and key signature of one sharp (F#). Features accents (^) and dynamics *mf* and *f*.

A. Sax.

A. Sax. staff with treble clef and key signature of one sharp (F#). Features a slur over the first four measures.

T. Sax.

T. Sax. staff with treble clef and key signature of one sharp (F#). Features a slur over the first four measures.

Tbn.

Tbn. staff with bass clef and key signature of one flat (Bb). Features accents (^) and dynamics *mf* and *f*.

D. Set

D. Set staff with a double bar line at the beginning, indicating a drum set part.

Pno.

Pno. grand staff with treble and bass clefs and key signature of one flat (Bb). Features comping notation (slashes) and the word "Comping" in the final measure.

El. B.

El. B. staff with bass clef and key signature of one flat (Bb).

65

harm. *Am7* | *A^bdim7* | *Gm7* | | | *A7^{b13}* | | | *Dm7* | *D7(b9)* |

Pff. *mf*

Tpt. in Bb *mf*

A. Sax.

T. Sax.

Tbn. *mf*

D. Set

Pno.

El. B.

73

G7

Db7(#11)

C7

B1F⁶/₉

C7(13)

F⁶/₉

F7

harm.

harm. staff with chord symbols: G7, Db7(#11), C7, B1F⁶/₉, C7(13), F⁶/₉, F7.

Pff.

Pff. staff with a triplet of eighth notes in the first measure.

Tpt. in Bb

Tpt. in Bb staff with dynamics *mp* and *p*.

A. Sax.

A. Sax. staff with dynamics *mp* and *p*.

T. Sax.

T. Sax. staff with dynamics *mp* and *p*.

Tbn.

Tbn. staff with dynamics *mp* and *p*.

D. Set

D. Set staff with dynamics *p* and *mp*.

Pno.

Pno. staff with slash notation indicating chords.

El. B.

El. B. staff with a bass line.

81 **Bb7(13)** | **Eb7(#11)** | **Fmaj7** | **D7b9** | **Gm7** | **C7** | **Am7** | **Dm7** | **D7** | **Gm7**

harm. *f*

Pff. *f*

Tpt. in Bb *mf* *f*

A. Sax. *p* *mf* *f*

T. Sax. *p* *mf* *f*

Tbn. *p* *mf* *f*

D. Set

Pno. *p* *f*

El. B.

B2

90

C7^{b13}

F^{6/9}

C7^(b9)

F⁶

A7^{b13}

Dm7 Db7^(#11)

Cm7 F7^{b9}

B^bm7

E^b7

harm.

harp. part with notes and chords: C7^{b13}, F^{6/9}, C7^(b9), F⁶, A7^{b13}, Dm7 Db7^(#11), Cm7 F7^{b9}, B^bm7, E^b7.

Pff.

Pff. part with notes and rests.

mp ————— *f*

Tpt. in B^b

Tpt. in B^b part with notes and dynamics: *mp* ————— *f*.

A. Sax.

A. Sax. part with notes and dynamics: *f*.

T. Sax.

T. Sax. part with notes and dynamics: *f*.

Tbn.

Tbn. part with notes and dynamics: *f*.

D. Set

D. Set part with notes and dynamics: *mf* ————— *f*.

Pno.

Pno. part with notes and dynamics: *mf* ————— *f*.

El. B.

El. B. part with notes and dynamics: *f*.

99 *Am7b5* | *D7b9* | *Bm7* | *E7b13* | *Am7* | *D7#9* | *Gm7* | *C7b13* | *F6/4*

harm.

Pff.

Tpt. in Bb

A. Sax.

T. Sax.

Tbn.

D. Set

Pno.

El. B.

108

A3

Soli

Am7 Abdim7 Gm7 D7 Gm7 C7 C7b13 Am7 Abdim7 Gm7 A7b13

harm.

harm. staff with treble clef, key signature of one flat, and a sharp sign. It contains a double bar line with repeat dots and a vertical line, followed by ten empty measures.

Pff.

Pff. staff with treble clef and key signature of one flat. It contains a double bar line with repeat dots and a vertical line, followed by ten empty measures.

Tpt. in Bb

Tpt. in Bb staff with treble clef and key signature of one flat. It contains a double bar line with repeat dots and a vertical line, followed by ten empty measures.

A. Sax.

A. Sax. staff with treble clef and key signature of one flat. It contains a double bar line with repeat dots and a vertical line, followed by ten empty measures.

T. Sax.

T. Sax. staff with treble clef and key signature of one flat. It contains a double bar line with repeat dots and a vertical line, followed by ten empty measures.

Tbn.

Tbn. staff with bass clef and key signature of one flat. It contains a double bar line with repeat dots and a vertical line, followed by ten empty measures.

Ride swing

D. Set

D. Set staff with a drum set icon. It contains a double bar line with repeat dots and a vertical line, followed by ten empty measures.

Pno.

Pno. grand staff with treble and bass clefs and key signature of one flat. The treble clef part has a bracket over the first measure and contains eighth notes in the first four measures. The bass clef part contains a double bar line with repeat dots and a vertical line, followed by ten empty measures.

El. B.

El. B. staff with bass clef and key signature of one flat. It contains a double bar line with repeat dots and a vertical line, followed by ten measures of diagonal slashes.

118

harm. *Dm7* *D7(b9)* *G7* *A7(b9)* *D7* **A4** *Gm7* *D7* *Gm7*

Pff.

Tpt. in Bb

A. Sax.

T. Sax.

Tbn.

D. Set

Pno.

El. B.

128

C7 C7^{b13} Am7 A^bdim7 Gm7 A7^{b13} Dm7 D7^(b9) G7

harm.

Pff.

Tpt. in Bb

A. Sax.

T. Sax.

Tbn.

D. Set

Pno.

El. B.

B3

138

Db7(#11)

C7

F⁶/₉

C7(13)

F⁶/₉

F7

Bb7(13)

Eb7(#11)

Fmaj7

D7b9

Gm7

C7

Am7

harm.

Pff.

Tpt. in Bb

A. Sax.

T. Sax.

Tbn.

D. Set

Pno.

El. B.

B4

152

D7#9 Gm7 C7b13 F#9 C7(b9) F6 A7b13 Dm7 G7 Cm7 F7b9 Bbm7 Eb7 A7b5 D7b9 Bm7 E7b13 Am7

harm.

Pff.

Tpt. in Bb

A. Sax.

T. Sax.

Tbn.

D. Set

Pno.

El. B.

C1

168

D7#9 Gm7 C7b13 F#9

1. Am7 Abdim7 2. Ab7 Db6

Ab7(b13) Db6 Ab7(b13) Fm7b5 Bb7(b13)

harm.

Pff.

Tpt. in Bb

A. Sax.

T. Sax.

Tbn.

D. Set

Pno.

El. B.

mf

180

E^bm7

A^b7

G^b7

D^b7

B^b7(^{b9})

E^bm7

E^{dim}7

E^b7

harm.

Staff for Harmonica (harm.) showing chord symbols: E^bm7, A^b7, G^b7, D^b7, B^b7(^{b9}), E^bm7, E^{dim}7, E^b7. The staff contains rests for each measure.

Pff.

Staff for Piano (Pff.) showing rests for all measures.

Tpt. in B^b

Staff for Trumpet in B^b showing rests for all measures.

A. Sax.

Staff for Alto Saxophone (A. Sax.) showing a melodic line with eighth notes, quarter notes, and rests. Includes accents and a triplet of eighth notes in the fourth measure.

T. Sax.

Staff for Tenor Saxophone (T. Sax.) showing a melodic line with eighth notes, quarter notes, and rests. Includes accents and a triplet of eighth notes in the fourth measure.

Tbn.

Staff for Trombone (Tbn.) showing rests for all measures.

D. Set

Staff for Drum Set (D. Set) showing rests for all measures.

Pno.

Grand staff for Piano (Pno.) showing rests for both the right and left hands across all measures.

El. B.

Staff for Electric Bass (El. B.) showing rests for all measures.

189 **C2**

harm. $A\flat 7$ $D\flat maj 7$ $Cm 7\flat 5$ $F 7(\flat 13)$ $B\flat m 7$ $A m 7$ $A\flat m 7$ $D\flat 7(\flat 9)$ $G\flat maj 7(\sharp 11)$ $B 7(\sharp 11)$

Pff.

Tpt. in B \flat

A. Sax.

T. Sax.

Tbn.

D. Set

Pno.

El. B.

198

Cm7^{b5}

F7(^{b13})

Fm7^{b5}

B^b7

E^bm7

A7(^{#11})

A^b7

D^b6

D1

harm.

Notation for the harp part, showing a treble clef and a key signature of three flats. The staff contains a series of rests corresponding to the chord changes indicated above.

Pff.

Notation for the piano part, showing a treble clef and a key signature of three flats. The staff contains a series of rests.

Tpt. in B^b

Notation for the trumpet in Bb part, showing a treble clef and a key signature of two flats. The staff contains a series of rests.

A. Sax.

Notation for the alto saxophone part, showing a treble clef and a key signature of two flats. The staff contains a melodic line with eighth and quarter notes, ending with an accent (^) on the final note.

T. Sax.

Notation for the tenor saxophone part, showing a treble clef and a key signature of two flats. The staff contains a melodic line with eighth and quarter notes, ending with an accent (^) on the final note.

Tbn.

Notation for the tuba part, showing a bass clef and a key signature of three flats. The staff contains a series of rests.

D. Set

Notation for the drum set part, showing a double bar line at the beginning and a series of rests throughout the staff.

Pno.

Notation for the piano part, showing a grand staff with treble and bass clefs and a key signature of three flats. The staff contains a series of rests.

El. B.

Notation for the electric bass part, showing a bass clef and a key signature of three flats. The staff contains a series of rests.

harm.

Pff.

Tpt. in Bb

A. Sax.

T. Sax.

Tbn.

D. Set

Pno.

El. B.

The musical score for page 26, rehearsal mark 211, consists of nine staves. The top staff is for Harm. (Harp), followed by Pff. (Piano), Tpt. in Bb (Trumpet in B-flat), A. Sax. (Alto Saxophone), T. Sax. (Tenor Saxophone), Tbn. (Tuba), D. Set (Drum Set), Pno. (Piano), and El. B. (Electric Bass). Each staff begins with a treble clef (except for Tbn. and El. B. which use a bass clef) and a key signature of three flats (B-flat, E-flat, A-flat). The first staff (Harm.) contains a series of chords in the first few measures, while the remaining staves contain rests throughout the entire piece.