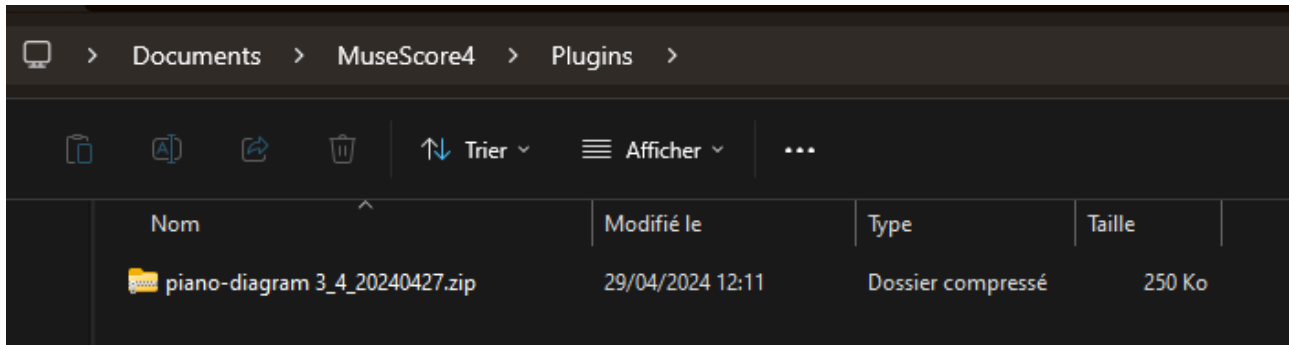
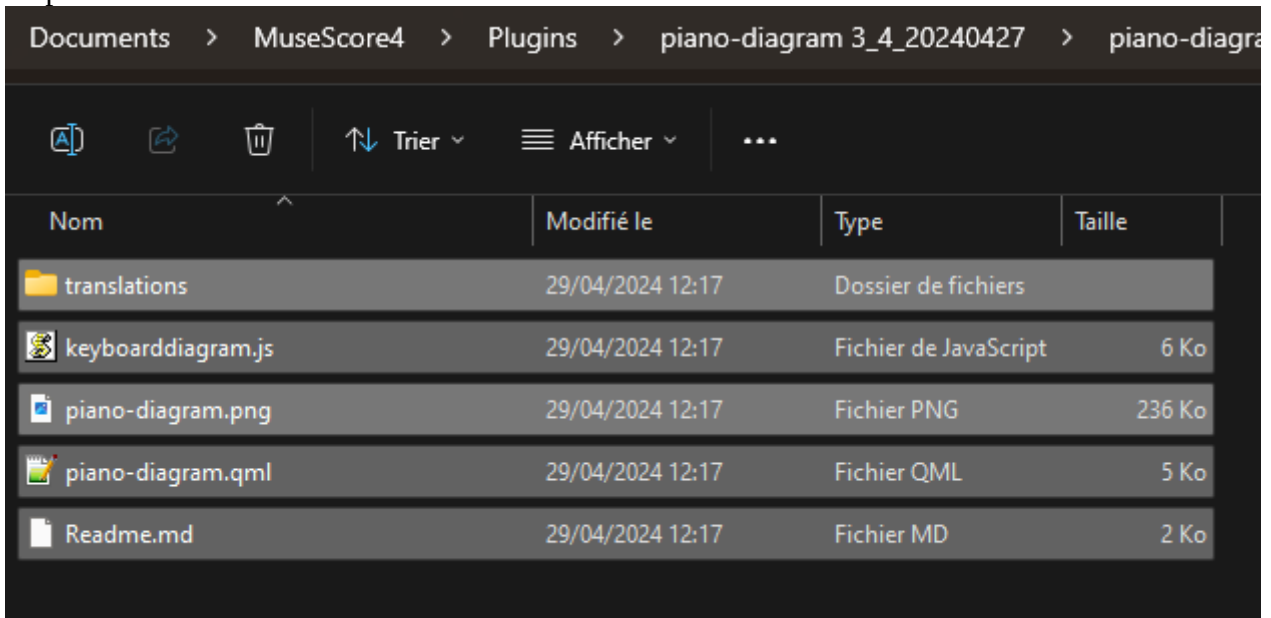


Plugin Piano Diagram

Installation



After unzip :



In keyboarddiagram.js

```
function calculer(formule) {
```

```
var resultat = 1;
```

```
//0 : only diagram of the chord  
//1 : chord diagram + inversions  
//2 : double octave (for scales and modes)
```

```
var ajustement2 = 0;  
//0 : No adjustment2  
//1 : ajustement2 : for better readability
```

Don't forget to save.

Sorry, but you have to change the piano-diagram.qml (it's a text file) line 69 :

```
68 //**KEYBOARD**
69 if (nbnotes > 1) {
```

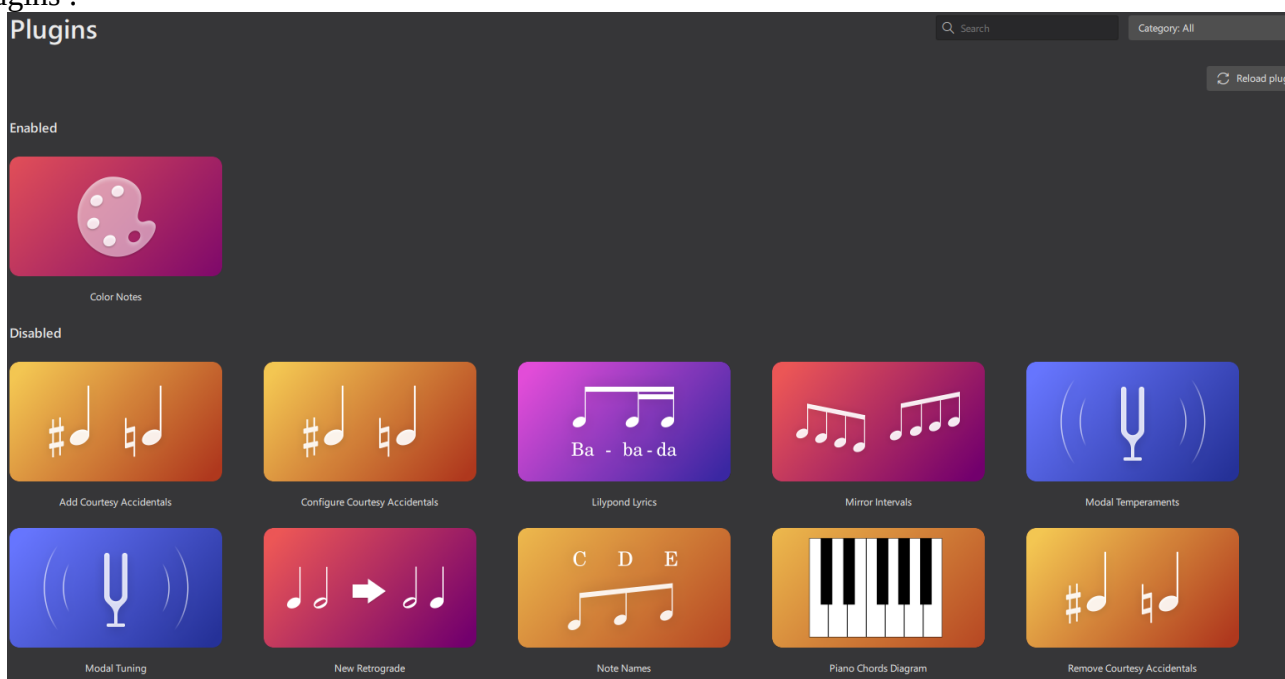
change the « 1 » in 2

```
68 //**KEYBOARD**
69 if (nbnotes > 2) {
```

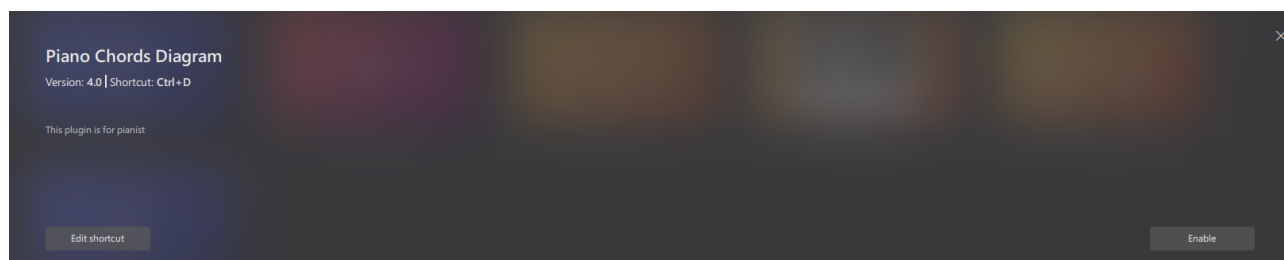
and **save** the file.

Open MuseScore4

In plugins :



Click on Piano Chords Diagram




Click
Enable

Open a score

Partition sans titre

Sous-titre

Piersyl



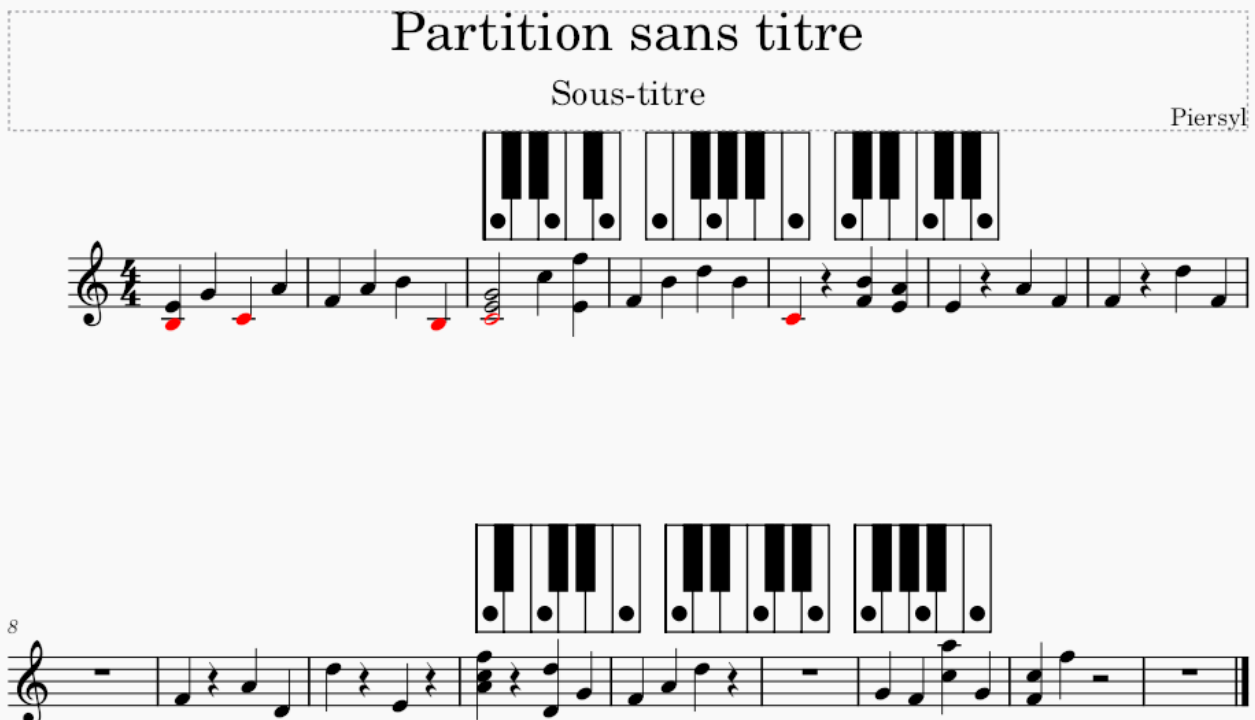
8

If I don't select anything and Launch Plugins > Piano chord diagrams, the result is :

Partition sans titre

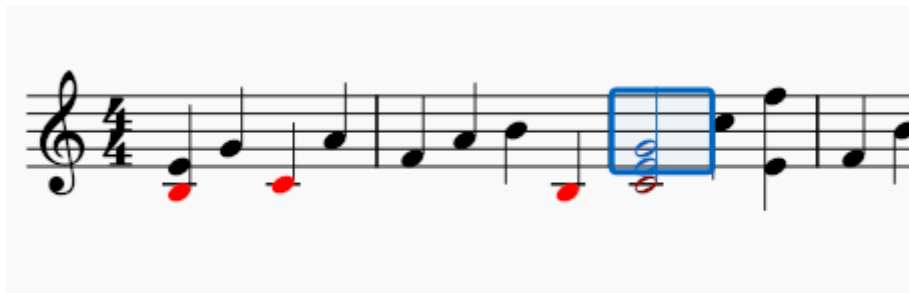
Sous-titre

Piersyl



8

If you want the diagram + inversion (your initial choice) for only one chord, select it first



and launch the plugin :

Partition sans titre

Sous-titre

Piersyl

A screenshot of a music software interface. At the top, it says "Partition sans titre" and "Sous-titre". On the right, the name "Piersyl" is visible. Below the title, there is a piano keyboard diagram with three black keys highlighted. Underneath the keyboard, there is a musical staff in 4/4 time with a treble clef, showing a melody with quarter notes and rests. The notes are C4, D4, E4, F4, G4, A4, B4, C5. A red vertical line is positioned above the G4 note. Below the staff, there is another musical staff starting with a measure rest, followed by notes and rests.

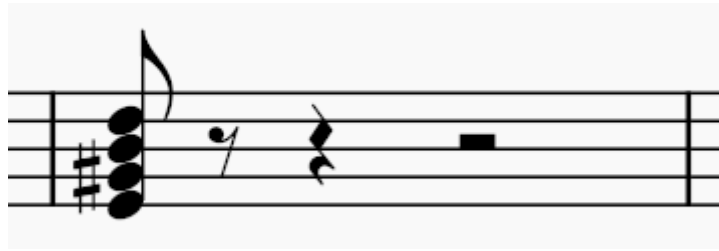
Drawing a diagram and hide it (in chord melody)

1 : In fact, you want only on diagram, then you have to configure the keyboarddiagram.js (resultat = 0)

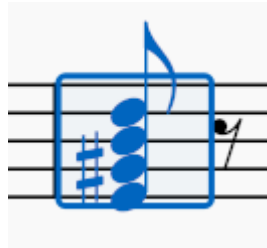
```
3 var resultat = 0;
4
5 //0 : only diagram of the chord
6 //1 : chord diagram + inversions
7 //2 : double octave (for scales and modes)
8
9 var ajustement2 = 0;
10 //0 : No ajustement2
11 //1 : ajustement2 : for better readability
```

Don't forget to Save the file before opening MuseScore

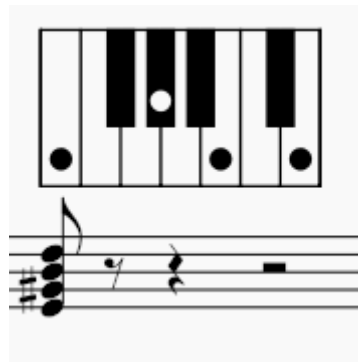
2 : In Musescore, Enter the chord



2 : Select the chord (all notes) (click E – D)



3 : Activate plugin :



4 : Remove the notes (one at a time otherwise you will erase the diagram)

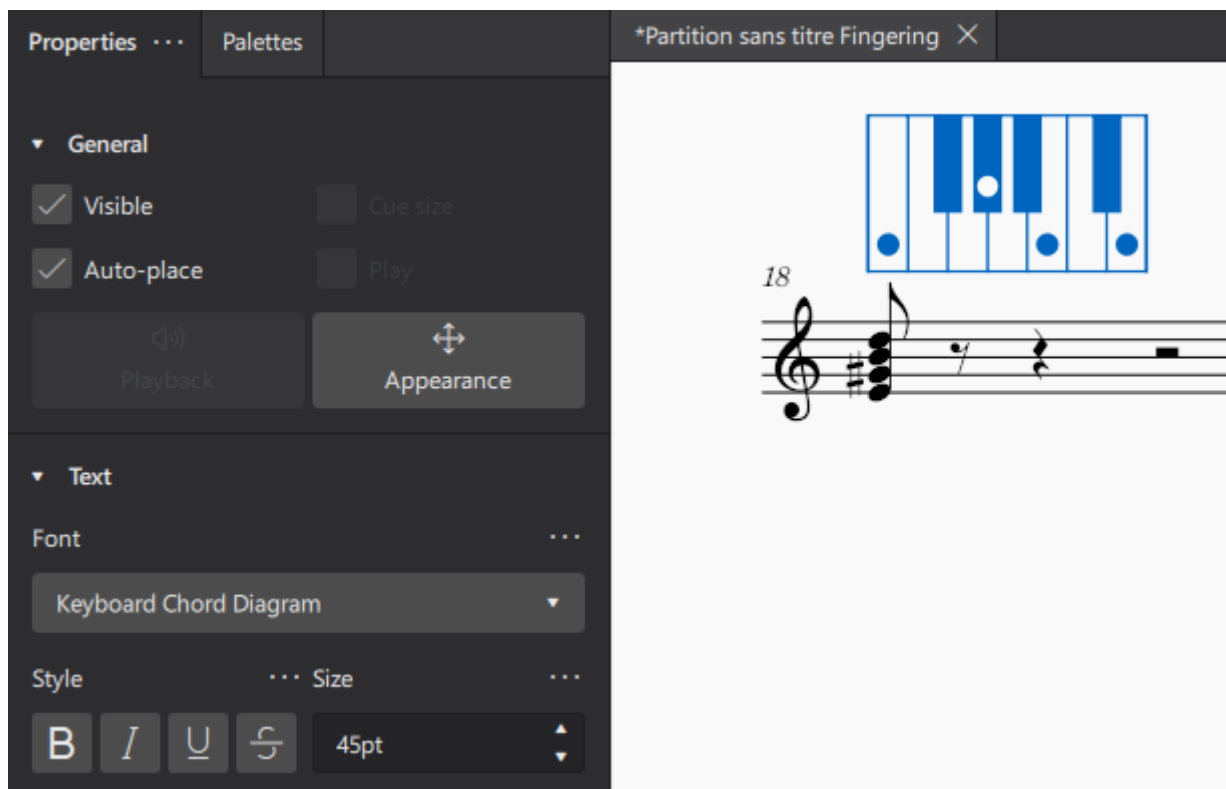
5 : Now you can enter the melody (and adding the chord name)

Size of the diagram

Select the diagram (click on it)

View>Properties (F8)

You can modify the Size (actually 45pt)



In your message :

Also, if I want to make additional new diagrams in MuseScore4, do I use the same formula eg. BbWw etc we used in MuseScore3?

The plugin create a formula, but in MS4, we can't see it.

The plugin is intended to automatically create diagrams. Never thought that users would use it in the palettes, sorry, especially since I can't even do it at home!

Piersyl