

In fact I have little experience in computer science and music. Consider the benefit of the inventory.

In my sheet music for choir ties, says Michael, maybe I imagine hear it.

After the post of IronJack I imported a midi file in 1.2 and Nightly (Suite #1 in G Major - Prelude).

The result is very different, see jpg in the conversation "Curiosity" (<http://musescore.org/en/node/19750>).

I tried to put slurs between the notes, randomly. The 1.2 supports this, Nightly insert ligatures, then will not let me delete them. I deleted some, some it was not possible, I tried to add and ... crash.

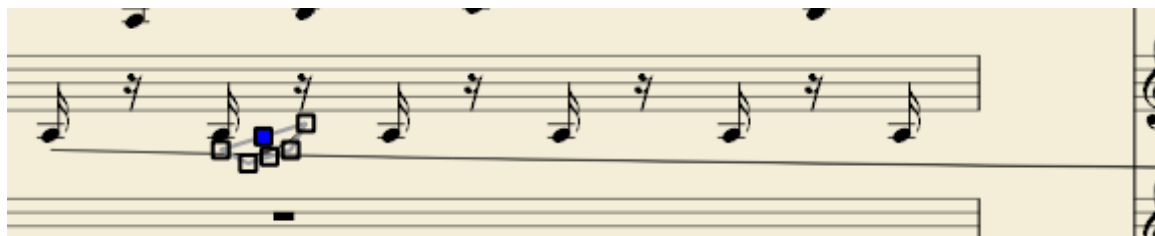
In Test1, if I do not have hallucinations, the slur is performed. Maybe because it comes from midi.

Since yesterday I installed the latest Nightly, I try to replicate:

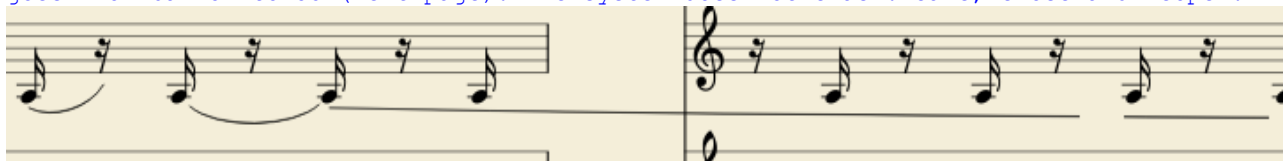
Import the same score, insert slurs, after two or three happens:



Moving on to the next slur:

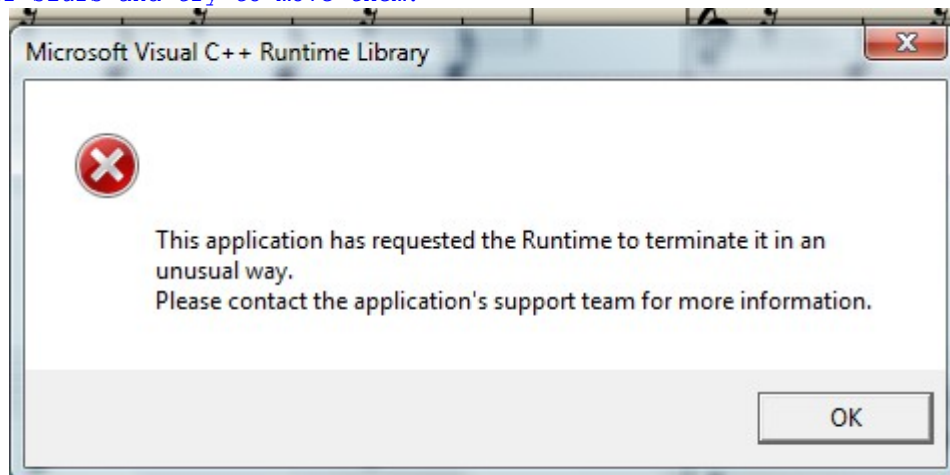


The problem persists if I try to not put on the next break but on the next note. The slur goes from bar 31 to 35 (next page). The system does not crash. Save, close and reopen:



Failed experiment?

Insert other slurs and try to move them:



And now? It is useful?

Greetings and good luck, Franz.