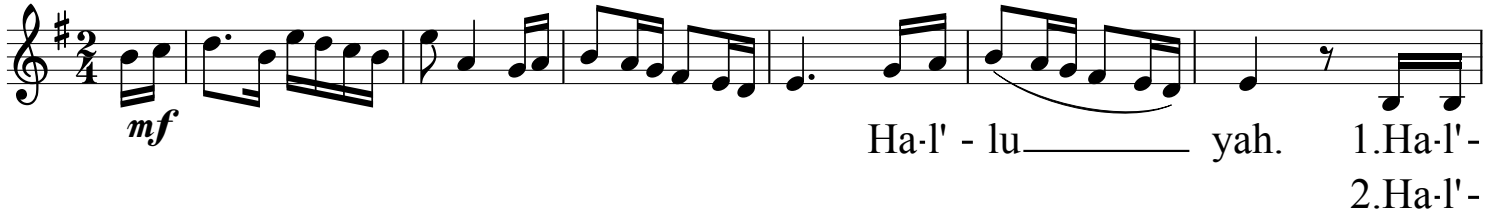


Hal'luyah

M. Wohlberg, arr. C. Davidson

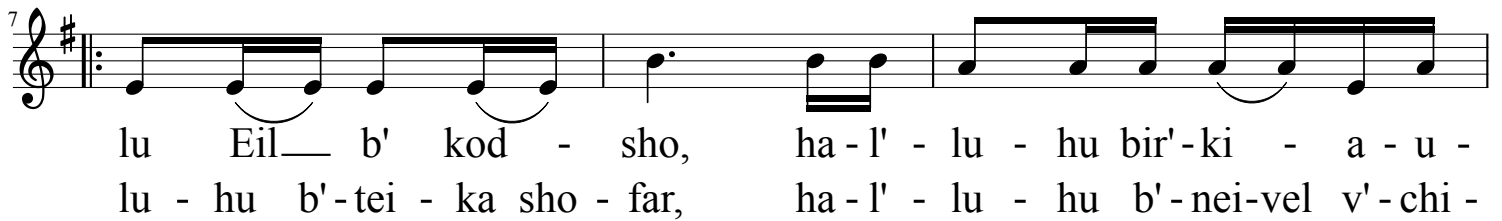
♩ = 92 - 96

Bm Em/B Am G/B D7/A Em Em Bm Em/B



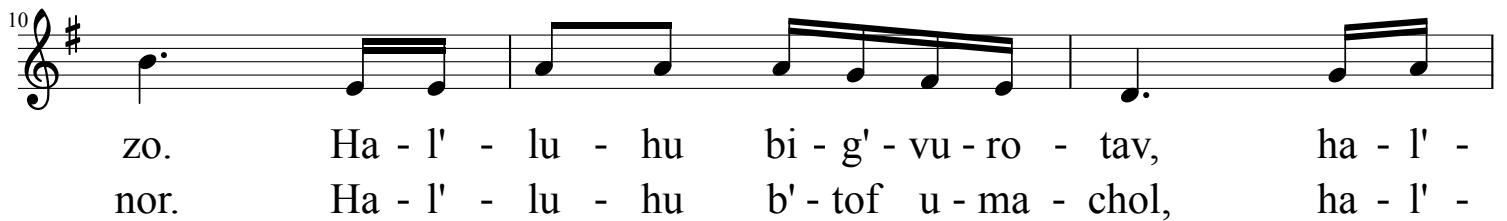
mf Ha-l' - lu _____ yah. 1. Ha-l' -
2. Ha-l' -

Em G Am/C D7



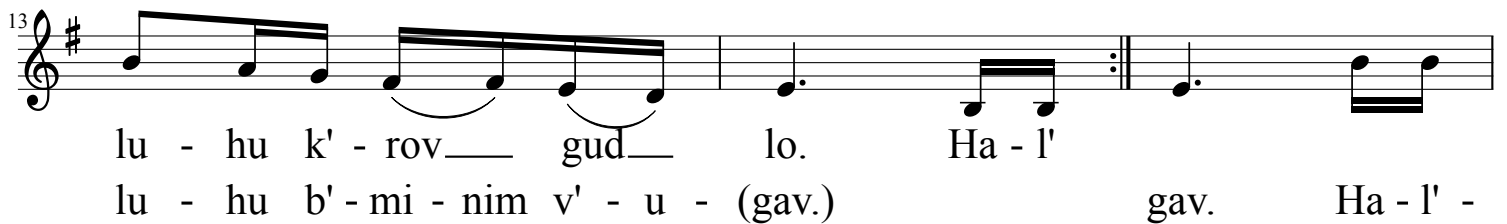
lu Eil_ b' kod - sho, ha - l' - lu - hu bir' - ki - a - u -
lu - hu b' - tei - ka sho - far, ha - l' - lu - hu b' - nei - vel v' - chi -

Em Am/C D/F#



zo. Ha - l' - lu - hu bi - g' - vu - ro - tav, ha - l' -
nor. Ha - l' - lu - hu b' - tof u - ma - chol, ha - l' -

G/B D 1. Em 2. Em



lu - hu k' - rov_ gud_ lo. Ha - l'
lu - hu b' - mi - nim v' - u - (gav.) gav. Ha - l' -

G A B G A B



lu - hu b' - tzil - tz' - lei sha - ma, ha - l' - lu - hu b' - tzil - tz' - lei t'ru - ah.

Cmaj7

Em/G

B/F#

Fmaj7

D

B



Kol han'-sha-ma t' - ha - leil Yah, ha - l' - lu - yah,

Am

D7

D

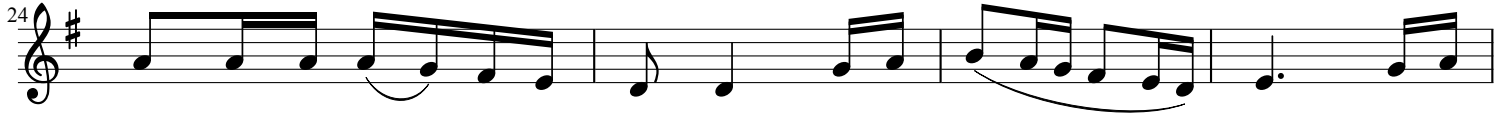
Am7

G

Bm7

C

Em/G



kol han'-sha-ma t' ha - leil yah, ha-l' - lu - yah, ha-l' -

G

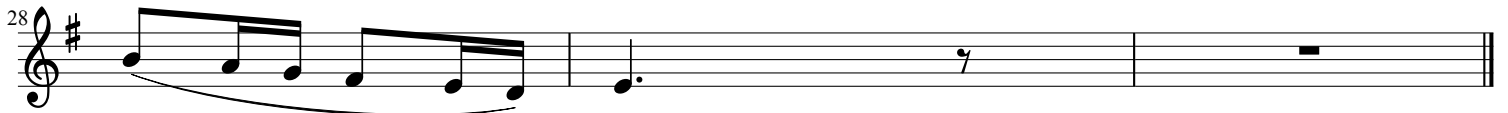
Bm7

Cmaj7

C

Am/F

Em



lu - yah.