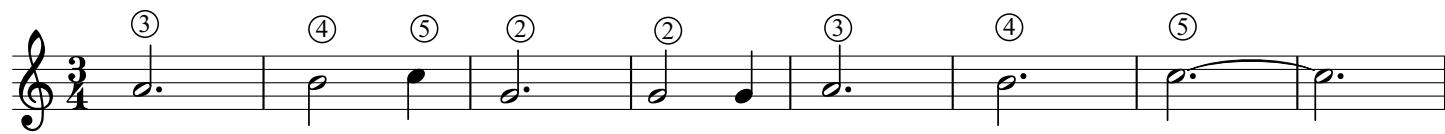
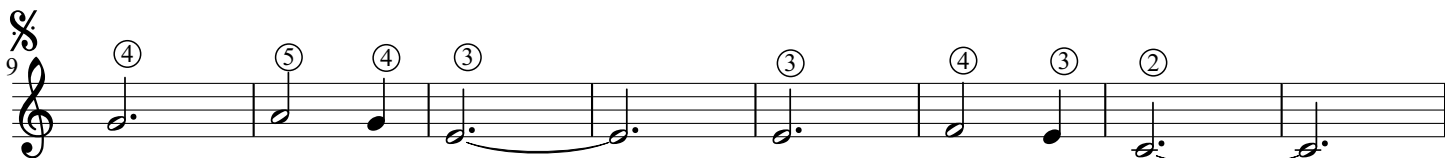


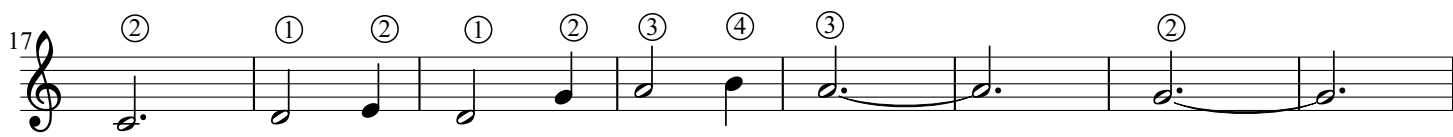
Klokke Roeland



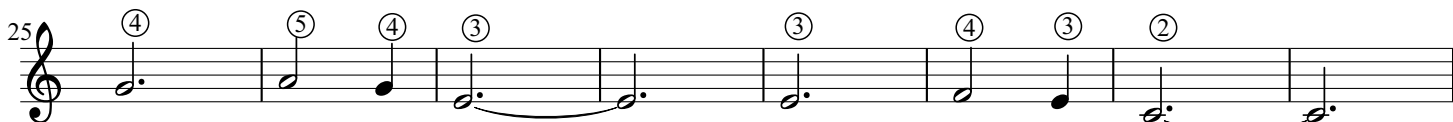
RE min SOL7 DO REmin SOL7 DO



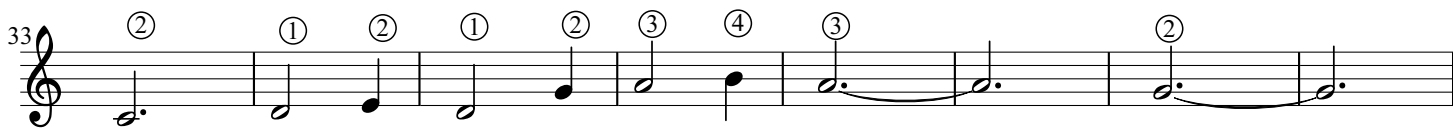
DO FA DO



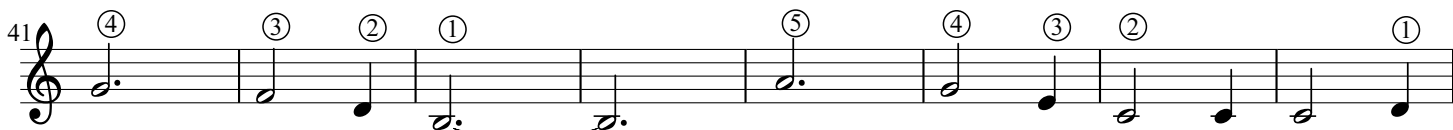
LA min SOL RE7 SOL7



DO FA DO



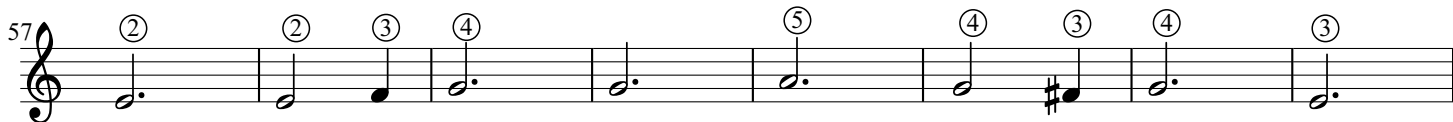
LAmin SOL RE7 SOL7



DO



DO dim SOL7



DO FA DO

Klokke Roeland

65

① ① ③ ④ ⑤ ④ ③ ④ ③

SOL7 DO

73

② ② ③ ④ ② ① ② ③

DO7 FA DO7 FA

81

② ④ ⑤ ② ② ③ ④ ⑤

RE min SOL7 DO SOL7 DO MI

SOL DO 2de x Fine

✂

Detailed description: The image shows a musical score for 'Klokke Roeland' in treble clef. It consists of three staves of music. The first staff starts at measure 65 and contains nine measures. The second staff starts at measure 73 and contains eight measures. The third staff starts at measure 81 and contains eight measures, ending with a double bar line and a repeat sign. Fingerings are indicated by circled numbers 1-5 above the notes. Chord names (SOL7, DO7, RE min, FA, DO, MI, SOL, DO) are written below the staves. The piece concludes with '2de x Fine' and a repeat sign.