

MIDI Sight Reader Plugin V1.5.2 for MuseScore V2.0.1

Introduction

Welcome to the MIDI sight reader plugin for MuseScore.

If you load a score into MuseScore, then plug in your MIDI keyboard, the plugin will check that you are playing the correct notes. At each step the notes in MuseScore will turn green when you are playing exactly the right notes (watch out if you slur the notes too much).

New in V1.5.2: Works with the new QML plugin framework.

New in V1.5: At the end of the score, the plugin will show you some statistics on your tempo and rhythm.

Rhythm is only calculated when you are playing the correct notes, so if you make mistakes, your score for rhythm will be lower. A score over 80% is excellent.

Currently, MIDISightReader calculates an overall rhythm, so if the score contains tempo changes, these are ignored. Also if the score tells you to slow down at the end, you will get a lower score for rhythm.

The percent displayed for tempo is likely to be wildly inaccurate as:

- The tempo may not have been specified in the score.
- There are some issues with MuseScore saving tempo data to MIDI files.

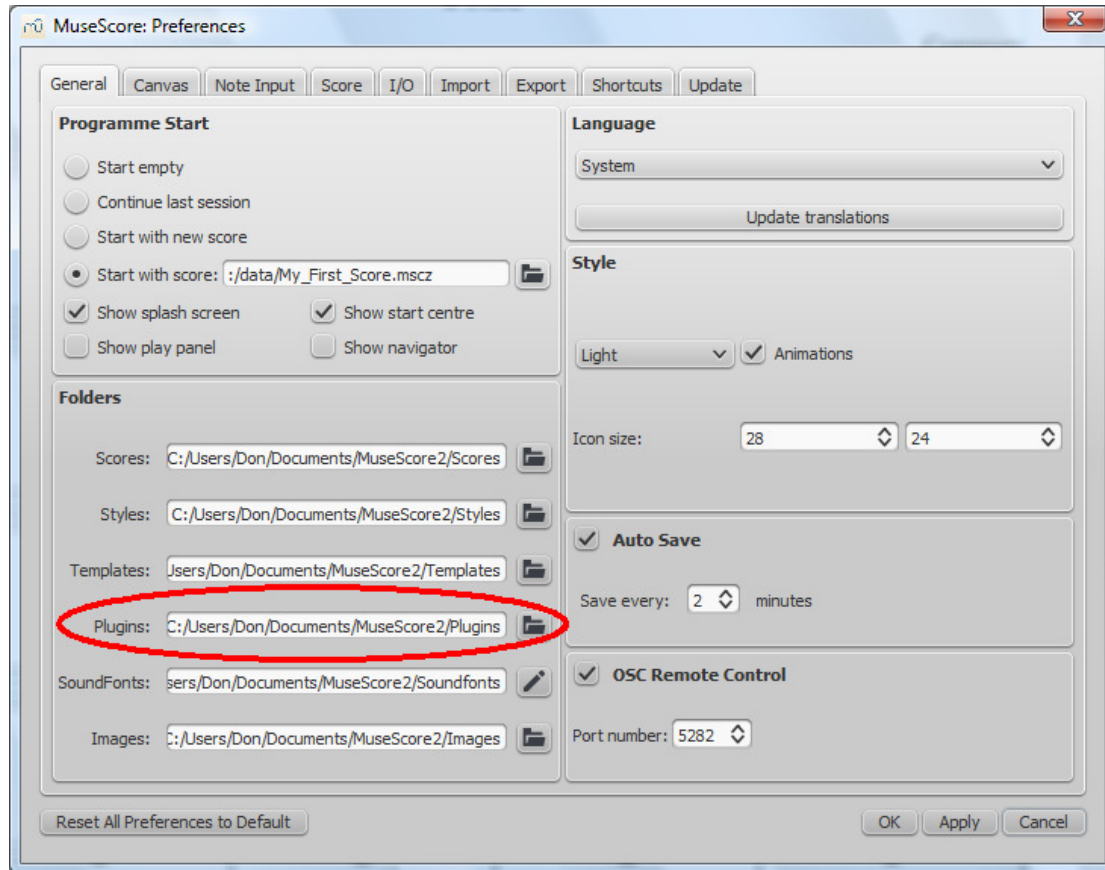
Prerequisites

The plugin works with version 2.0.1 of MuseScore. It does not work with earlier versions.

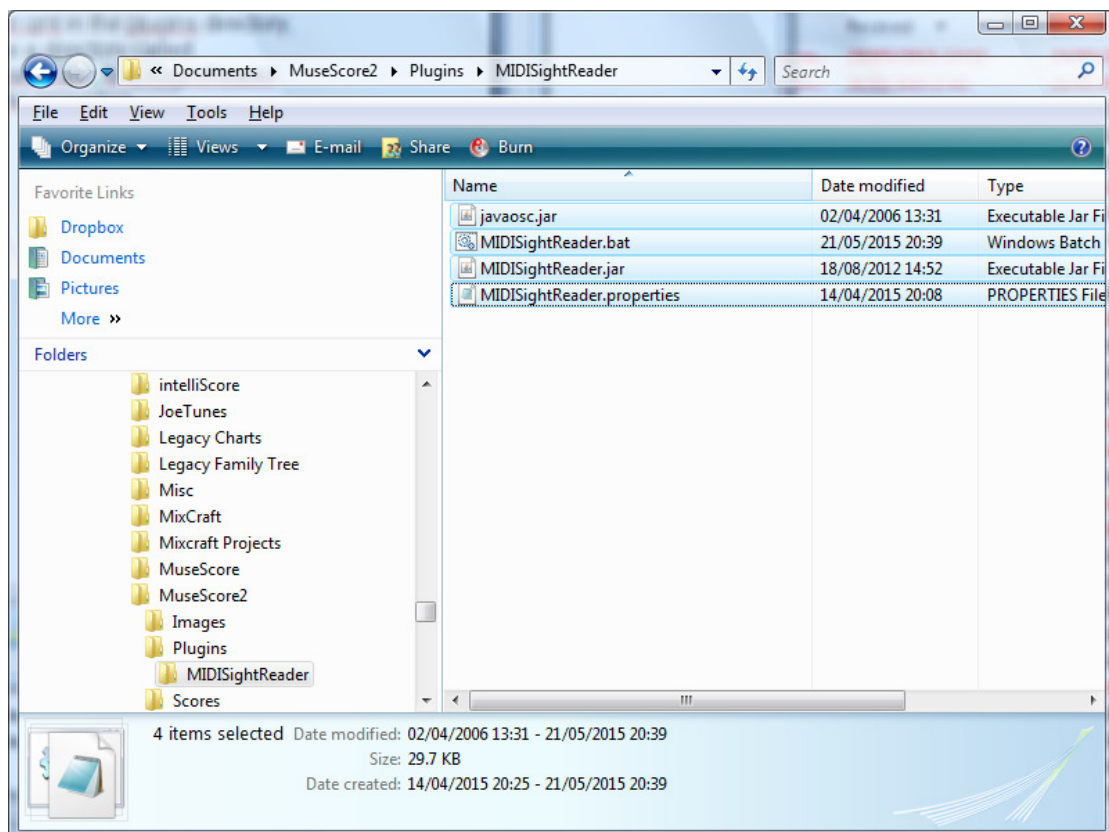
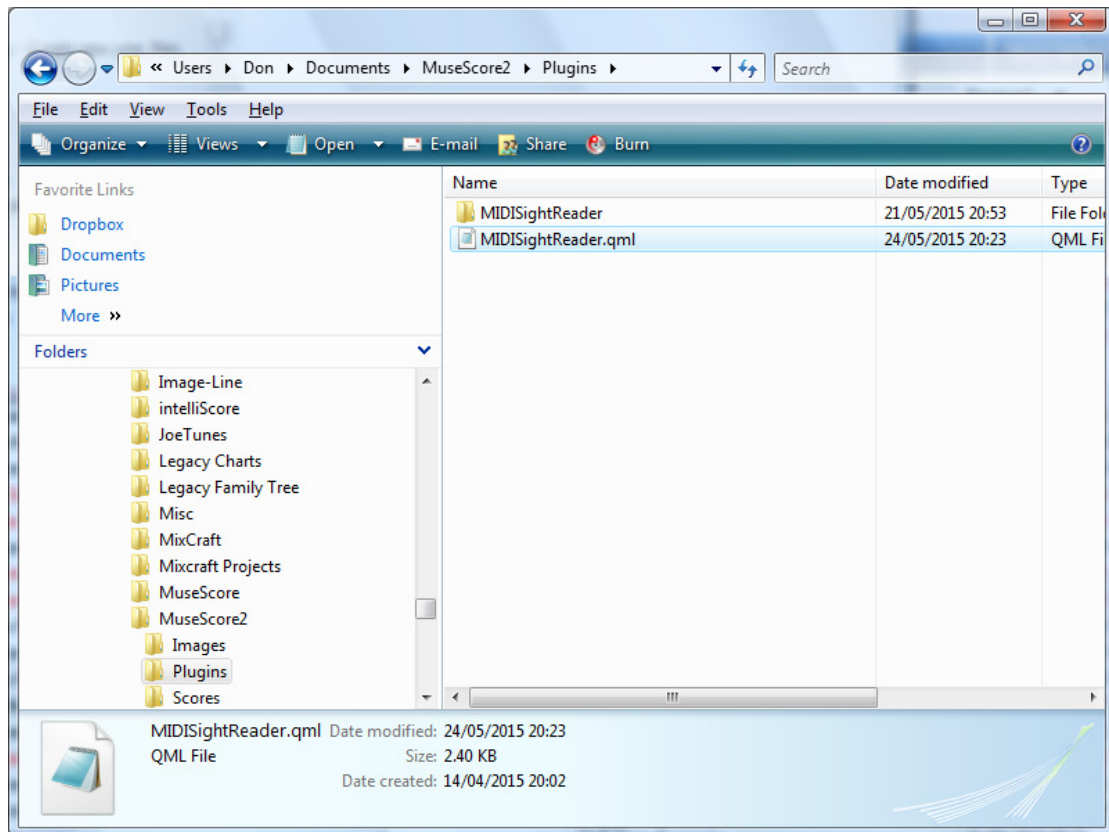
The plugin is written in Java, so you need to install Java 1.6 (Java 6) or higher and make sure that the Java executable file is on your path.

Installation

Unzip the plugin file to the plugins directory; select Preferences from the Edit menu to find the preferences directory.



You should end up with a file MIDISightReader.qml in the plugins directory, and under the plugins directory you should see a directory called MIDISightReader which contains four files: javaosc.jar , MIDISightReader .bat, MIDISightReader.jar and MIDISightReader.properties.



Configuration

You need to configure the name of the MIDI interface or keyboard you are using.

If you know the name of the MIDI interface or keyboard then edit the file `MIDISightReader.properties` and use it as the value for the `MIDIOut` property e.g.

```
MIDIOut = Midilink
```

If you don't know the name of the MIDI interface or keyboard, open a command window, change to the plugins directory and run this command:

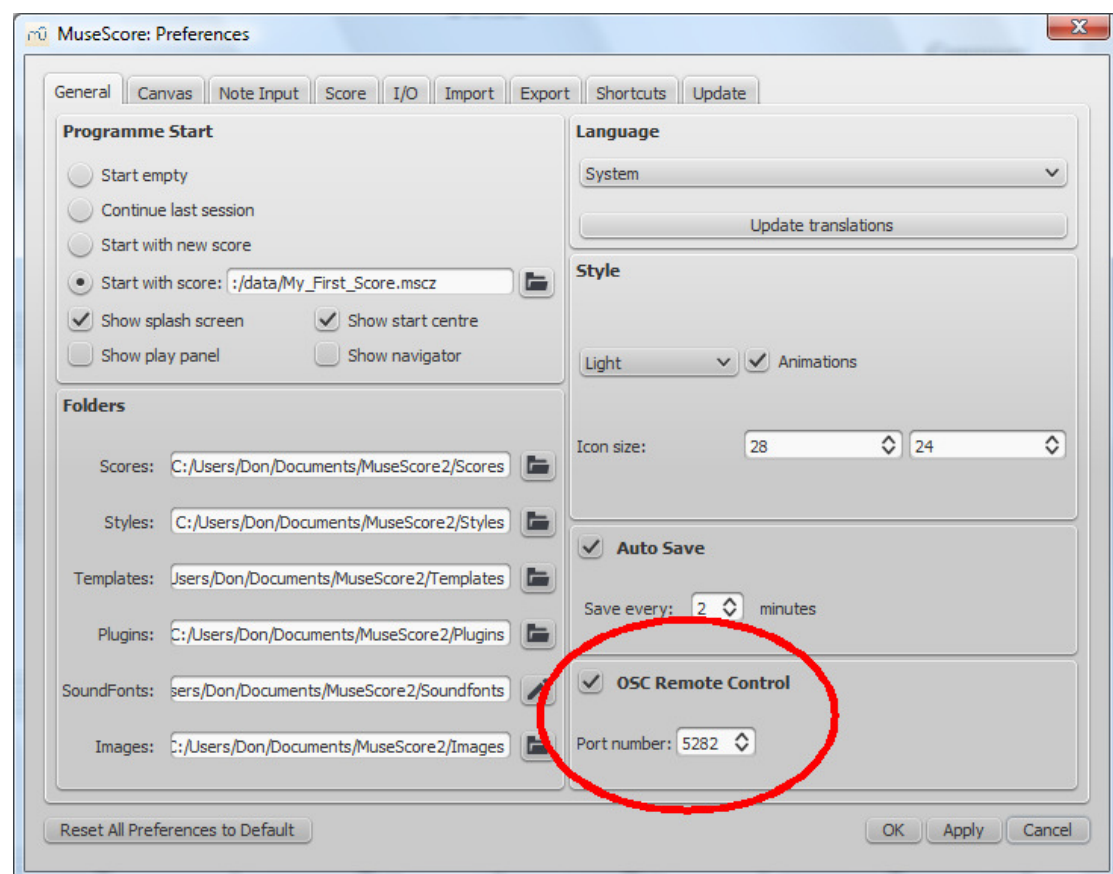
```
java -classpath  
MIDISightReader\MIDISightReader.jar;MIDISightReader\javaosc.jar  
com.dch.sightreader.MIDISightReaderPlugin
```

Look at the Configuration section of the printout and select your MIDI keyboard from there. NOTE that your MIDI keyboard needs to be plugged in before running the above command, but MuseScore should not be running.

If it is not clear which is your MIDI keyboard, try running the same command with your keyboard unplugged. Compare the two printouts and see what is different between the two; that will be the entry you need for your keyboard.

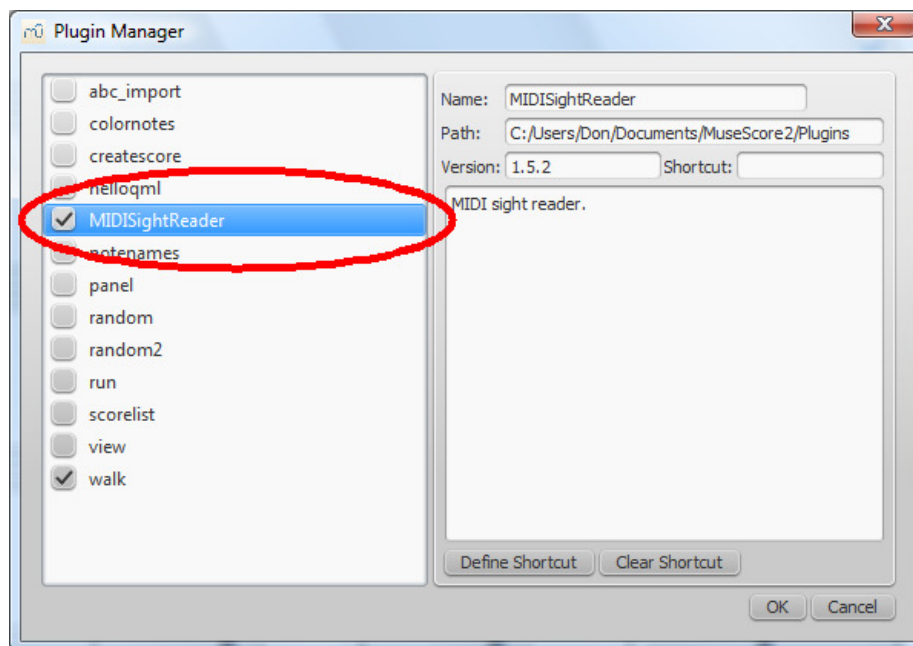
Now you need to start MuseScore and set it up.

From the Edit menu, select the Preferences menuitem.



On the General tab, enable the "OSC remote control" as above.

From the Plugins menu, select Plugin Manager and enable the MIDI_SightReader as below:



Press OK to save the settings.

Quit MuseScore, unplug your MIDI interface or keyboard and start MuseScore.

Use

Before starting MuseScore, unplug your MIDI keyboard.

Start MuseScore, plug in your MIDI keyboard, load a score and select “MIDI Sight Reader” from the Plugins menu.



When the plugin is ready, the first notes in your score will turn red. Now play the score on your MIDI keyboard, and watch the notes in MuseScore turn green as you play them.



If you do not play the MIDI keyboard for more than 60 seconds (configured in MIDISightReader.properties), the plugin will stop. Just select the menuitem for the MIDI Sight Reader to start again.

It is best to set your score to be read-only before using the plugin, and don't save the file after using the plugin.

Known Issues

Tied Notes

When playing tied notes, only the first note of the tie will turn green.

Swung Tunes

The plugin does not cope well with "swung" tunes. There seems to be a problem with MuseScore saving swung tunes as MIDI files.

Very Long Tunes

The interface to MuseScore does not work with very long tunes, but you are unlikely to encounter this problem.

Reported Tempo Percent

At the end of the score, the plugin reports on your tempo. This is likely to be inaccurate. A tempo may not have been specified in the score, and there are some issues with MuseScore saving tempo to MIDI files.

CurScore in Plugin

If you run the MIDI Sight Reader without a score loaded, MuseScore will not run the MIDI Sight Reader.

GUI

In this version, various dialog boxes are displayed by the Java code. If you bring other windows to the foreground, the dialog boxes from the Midi Sight Reader may end up behind other windows (there is no problem when using Windows). You will need to minimise the other windows in order to click OK on the dialog boxes.