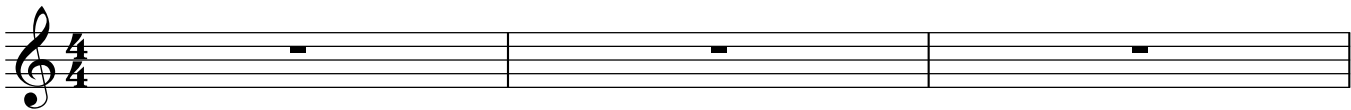



gdgdfgddg

Cmaj7



A musical staff in treble clef with a 4/4 time signature. It contains three measures, each with a whole rest (represented by a horizontal line with a short vertical tick in the center).

4



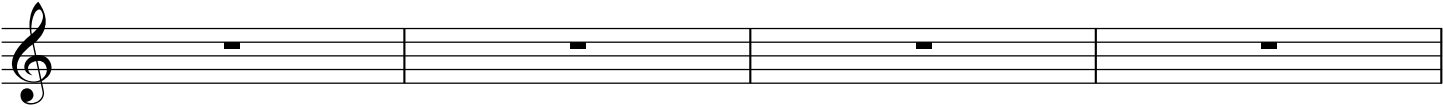
A musical staff in treble clef containing four measures, each with a whole rest.

8



A musical staff in treble clef containing four measures, each with a whole rest.

12



A musical staff in treble clef containing four measures, each with a whole rest.

16



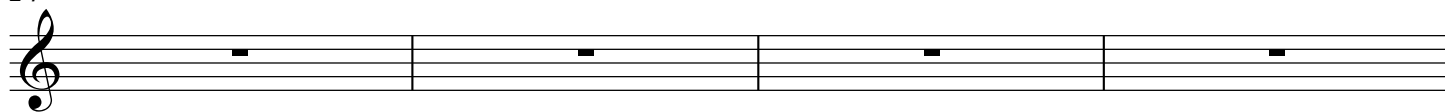
A musical staff in treble clef containing four measures, each with a whole rest.

2

20



24



28

