

Game of Thrones (leadsheet w/chords)

Musical notation for the first system, featuring a treble clef and 12/8 time signature. The melody consists of eighth notes with a descending contour. Chords are indicated as C- and C.

Musical notation for the second system, featuring a bass clef. The melody continues with eighth notes. Chords are indicated as C- and G-. A 'Theme' box is present at the beginning.

Musical notation for the third system, featuring a bass clef. The melody continues with eighth notes. Chords are indicated as Bb and C-. The system ends with a repeat sign and a '3x' marking.

Musical notation for the fourth system, featuring a bass clef. The melody continues with eighth notes. Chords are indicated as Ab, Eb, F-, C-, and G5. The system includes first and second endings.

Solo

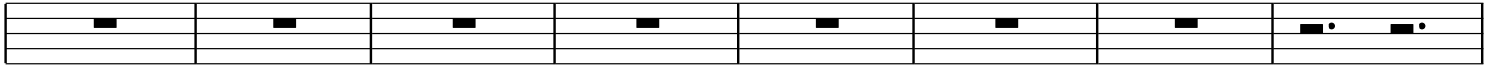
C/Db

A7#11

G7+

C/Ab

Eb-7



BbΔ#5

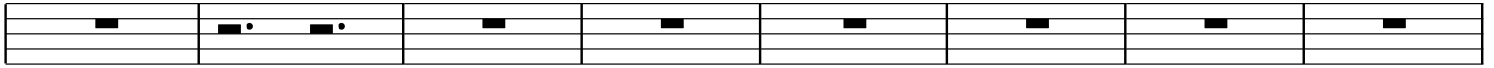
Gb07 D7b9#11

G

Gbsus

DΔ

BbΔ9#5



Db_{sus}/D

Db_{sus}/Bb

Db_{sus}/D

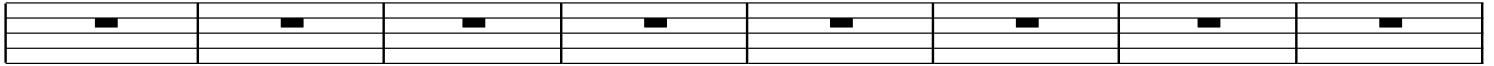
Db_{sus}/Bb

A/G

D+

A- G⁵

DbΔ



DΔ#5

B0

Gbsus

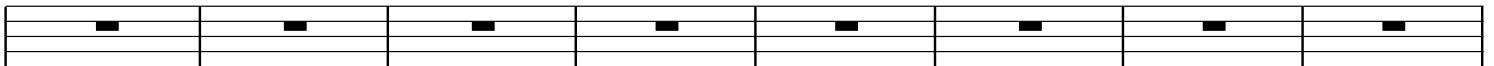
Gb

F-7 G_{sus}

C7+

F-7 G_{sus}

C-



AnyChord each measure!

