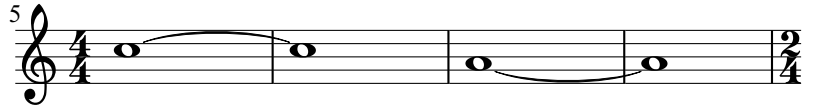
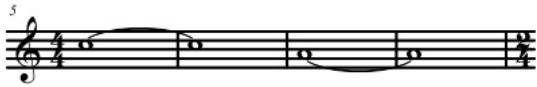


## Ties for single notes (in single voice context)

1. Ties should curve opposite to stem direction



2. Ties for whole notes should curve as if the notes had stem directions



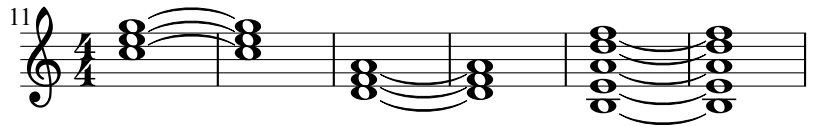
3. For mixed stem direction the tie is always placed above



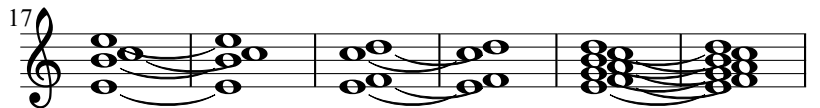
## Ties for chords (in single voice context)

4. For chords, the top tie should go up and the bottom tie should go down.

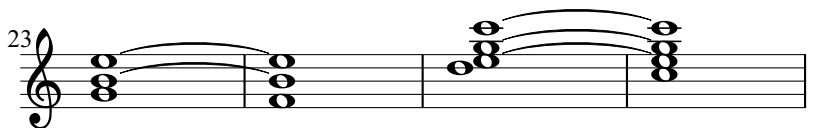
Ties in the middle should go up if they are above the middle staff line or down if they are on or below the middle staff line



5. For intervals of a second, the ties should go opposite directions, whenever possible



6. If some of the notes in the chord are not tied, the highest tie should still go up and the lowest tie should still go down



## Ties in multi-voice context

7. If more than one voice is present in a measure then ties should go the same direction as stems--regardless of whether they are single notes, chords, or intervals of a second.



In real life there are some exceptions to rule number 7 (above), but for now the one rule is good enough for a default behavior.