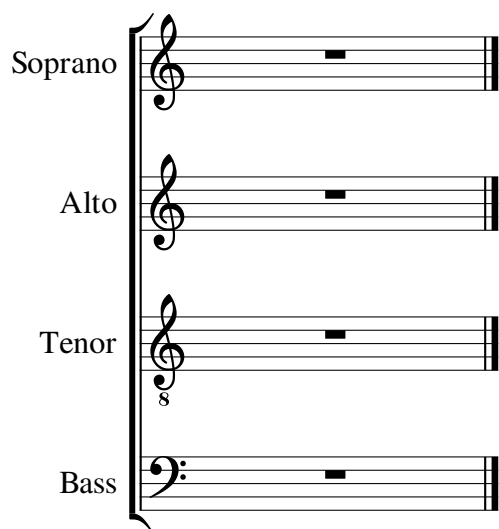


test number of pages \$n on all pages on all parts

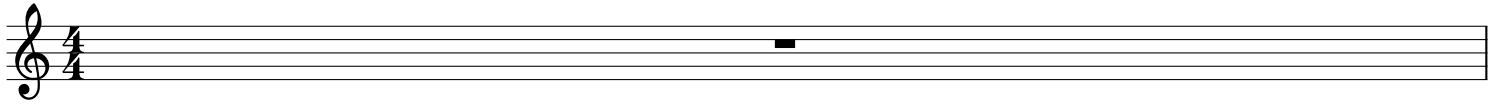
A musical score for four vocal parts: Soprano, Alto, Tenor, and Bass. Each part is written on a five-line staff. The Soprano, Alto, and Tenor parts use a treble clef, while the Bass part uses a bass clef. All four parts are in 4/4 time, as indicated by the time signature on the first staff. A single note is present on each staff, positioned at the midpoint of the first measure. The notes are all whole notes. The Soprano note is on the second line (F4), the Alto note is on the second space (E4), the Tenor note is on the second space (E3), and the Bass note is on the second line (F2). The Tenor staff has an '8' below the clef, indicating an octave shift. The parts are grouped by a large brace on the left side.

source = <https://musescore.com/score/1048316>
(page number on all pages) / (number of pages) = 1/2

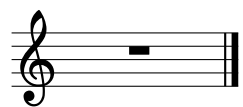


source = <https://musescore.com/score/1048316>
(page number on all pages) / (number of pages) = 2/2

Soprano test number of pages \$n on all pages on all parts



source = <https://musescore.com/score/1048316>
(page number on all pages) / (number of pages) = 3/4

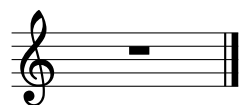


source = <https://musescore.com/score/1048316>
(page number on all pages) / (number of pages) = 4/4

Alto test number of pages \$n on all pages on all parts



source = <https://musescore.com/score/1048316>
(page number on all pages) / (number of pages) = 5/6



source = <https://musescore.com/score/1048316>
(page number on all pages) / (number of pages) = 6/6

Tenor test number of pages \$n on all pages on all parts



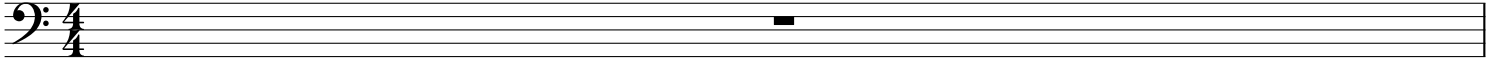
source = <https://musescore.com/score/1048316>

(page number on all pages) / (number of pages) = 7/8

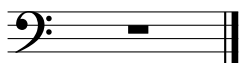


source = <https://musescore.com/score/1048316>
(page number on all pages) / (number of pages) = 8/8

Bass test number of pages \$n on all pages on all parts



source = <https://musescore.com/score/1048316>
(page number on all pages) / (number of pages) = 9/10



source = <https://musescore.com/score/1048316>
(page number on all pages) / (number of pages) = 10/10